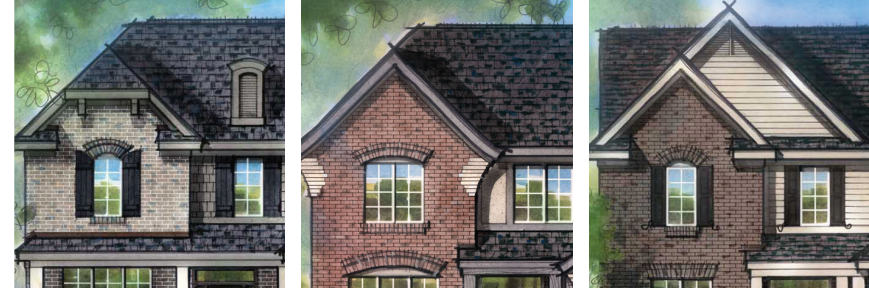
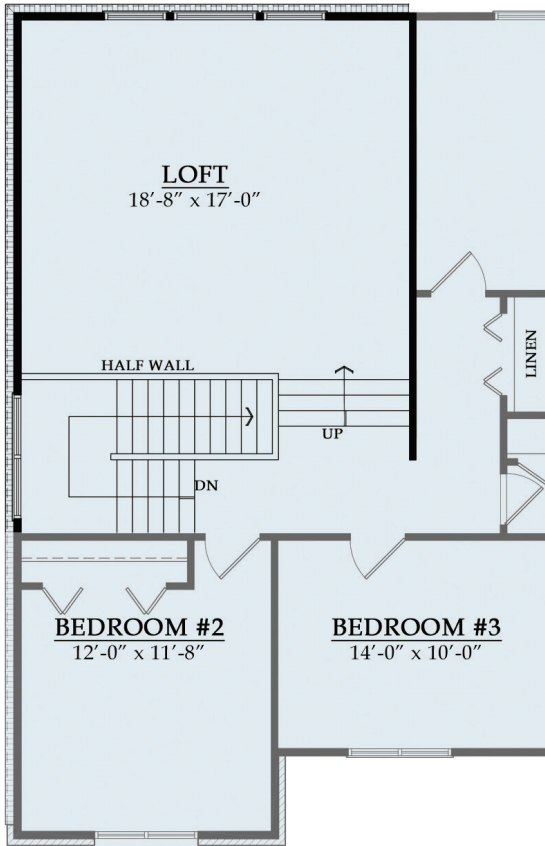


KIRKWOOD

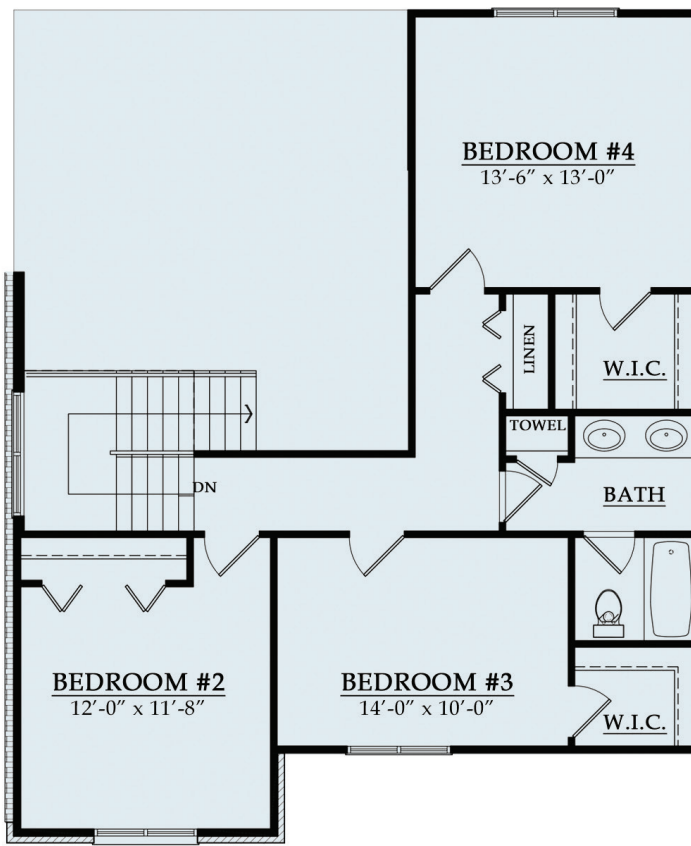
First Level 1,885 sf
 Second Level 8170 sf
 Total 2,702 sf



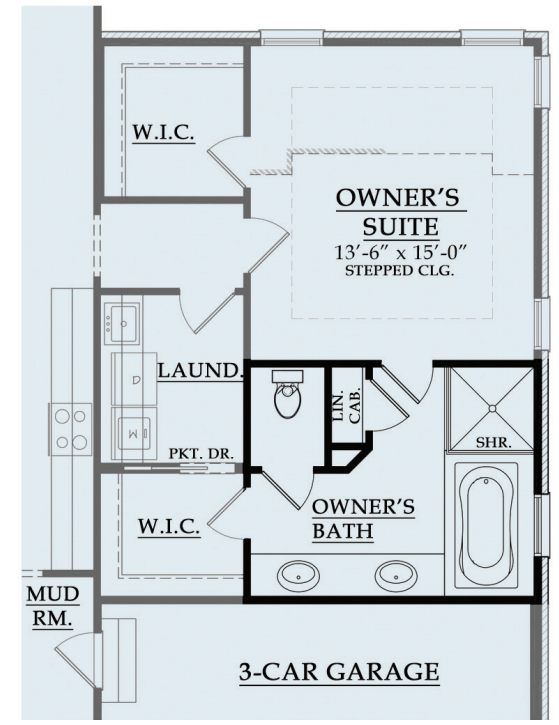
The Kirkwood is MJC's newest split-level home! The owner's suite is nestled away on the first floor with a large adjoining private bath, walk-in closets and direct laundry room access. The large open kitchen, dining and two level family room are located opposite the owner's suite on the first floor, with a large study, powder room and mud hall making up the balance of the main level. Upstairs, you'll find three additional bedrooms and a central bath. For more than 300 square-feet of additional space, consider the optional loft plan. A package drop area in the entry porch, and an alternate owner's bath layout are available as options.



• OPTIONAL LOFT PLAN



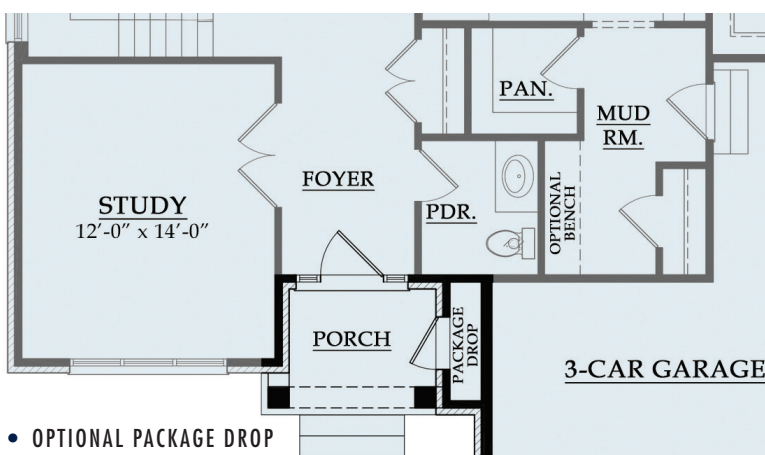
• SECOND LEVEL



• OPTIONAL OWNER'S BATH



• FIRST LEVEL



• OPTIONAL PACKAGE DROP



For Information Visit
MJCCompanies.com