

LAURA



SQUARE FOOTAGE
TOTAL: 2,230 SQ. FT.

53'-6" X 58'-6" FOOTPRINT
9'-0" 1ST FLOOR HEIGHT

FIRST FLOOR PLAN

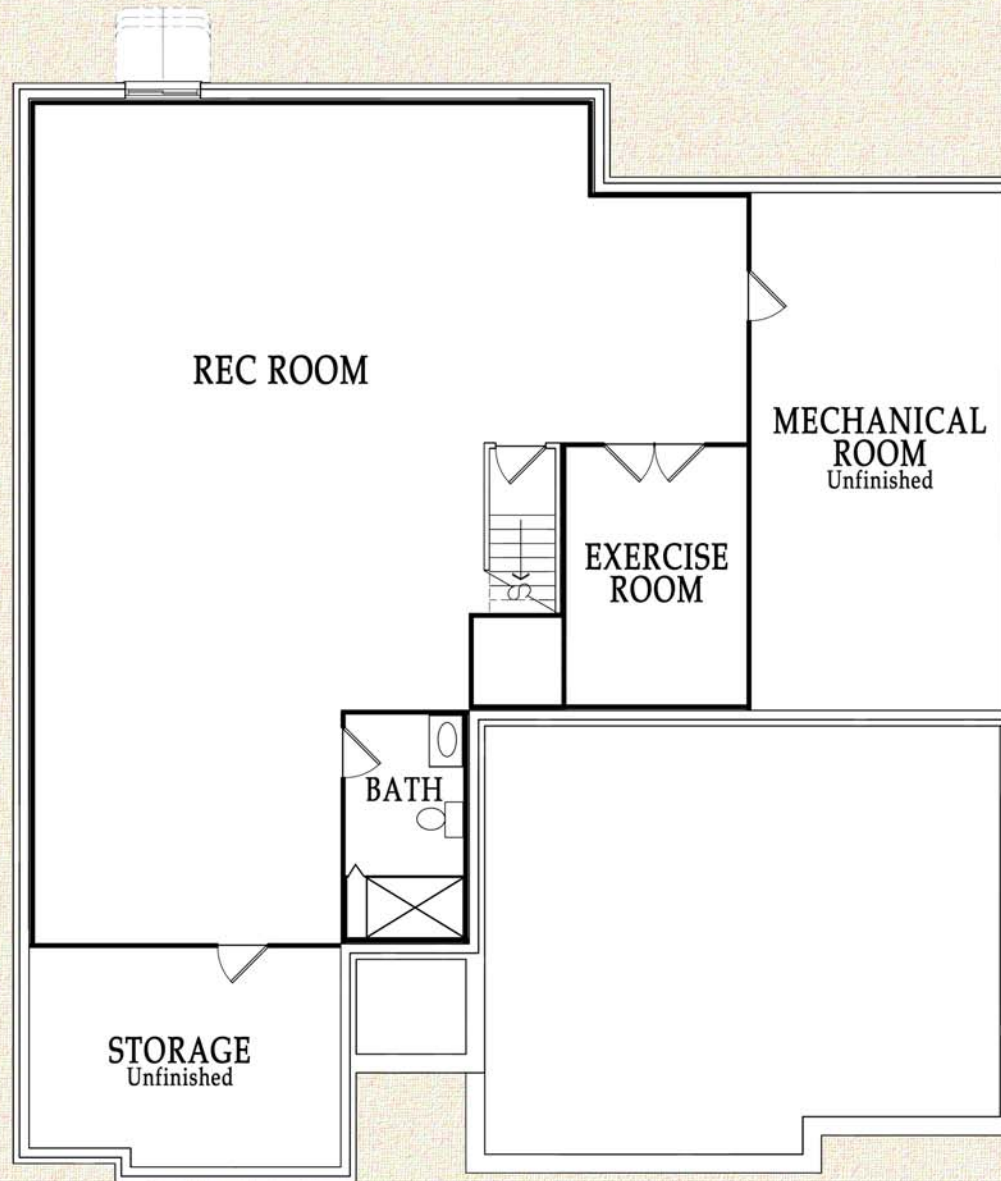
ARTIST RENDERINGS AND FLOOR PLANS ARE FOR ILLUSTRATION PURPOSES ONLY AND ARE SUBJECT TO CHANGE. THESE PLANS ARE NOT TO BE REPRODUCED, CHANGED, OR COPIED IN ANY FORM OR MANNER WHATSOEVER.

WE RESERVE THE RIGHT TO MAKE CHANGES IN DESIGN, FEATURES AND OPTIONS WITHOUT NOTICE OR OBLIGATION. FLOOR PLAN DIMENSIONS AND SQUARE FOOTAGES ARE APPROXIMATE. NOTE: PLANS WILL VARY PER ELEVATION.

© 2014 MJC Companies®



LAURA



BASEMENT FLOOR PLAN

ARTIST RENDERINGS AND FLOOR PLANS ARE FOR ILLUSTRATION PURPOSES ONLY AND ARE SUBJECT TO CHANGE. THESE PLANS ARE NOT TO BE REPRODUCED, CHANGED, OR COPIED IN ANY FORM OR MANNER WHATSOEVER.

WE RESERVE THE RIGHT TO MAKE CHANGES IN DESIGN, FEATURES AND OPTIONS WITHOUT NOTICE OR OBLIGATION. FLOOR PLAN DIMENSIONS AND SQUARE FOOTAGES ARE APPROXIMATE. NOTE: PLANS WILL VARY PER ELEVATION.

© 2014 MJC Companies®

