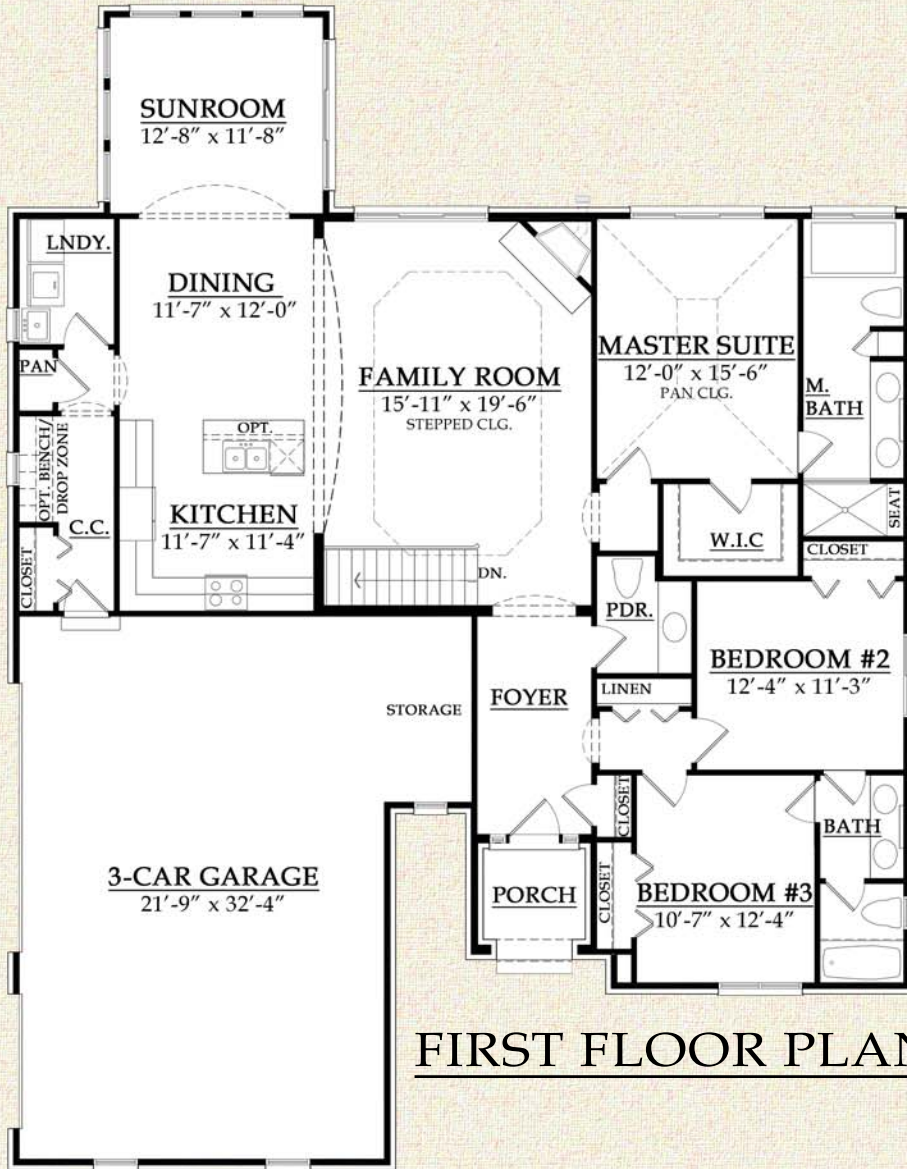
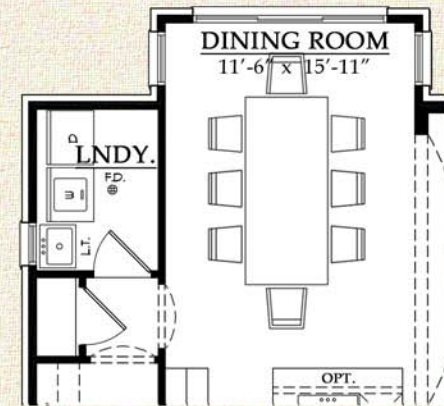


# MARISA DELUXE



**FIRST FLOOR PLAN**



**OPT. 4' EXPANDED  
DINING ROOM**

**SQUARE FOOTAGE**  
TOTAL: 2,015 SQ. FT.

54'-0" X 69'-4" FOOTPRINT



ARTIST RENDERINGS AND FLOOR PLANS ARE FOR ILLUSTRATION PURPOSES ONLY AND ARE SUBJECT TO CHANGE. THESE PLANS ARE NOT TO BE REPRODUCED, CHANGED, OR COPIED IN ANY FORM OR MANNER WHATSOEVER. WE RESERVE THE RIGHT TO MAKE CHANGES IN DESIGN, FEATURES AND OPTIONS WITHOUT NOTICE OR OBLIGATION. FLOOR PLAN DIMENSIONS AND SQUARE FOOTAGES ARE APPROXIMATE. NOTE: PLANS WILL VARY PER ELEVATION.

© 2015 MJC Companies®

