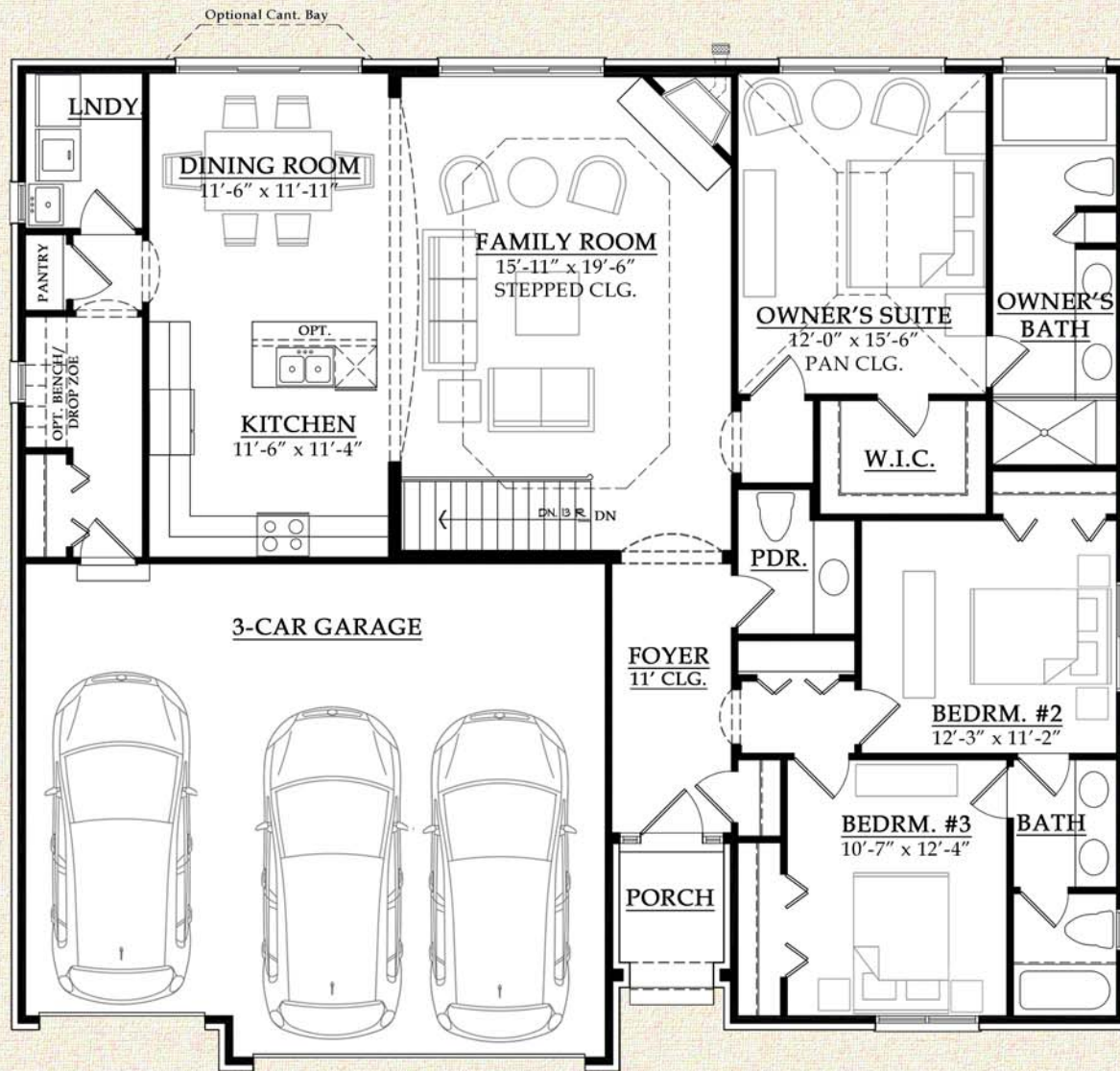


MARISA



FIRST FLOOR PLAN

SQUARE FOOTAGE
TOTAL: 1,835 SQ. FT.

54'-0" X 48'-10" FOOTPRINT
9'-0" FIRST FLOOR HEIGHT

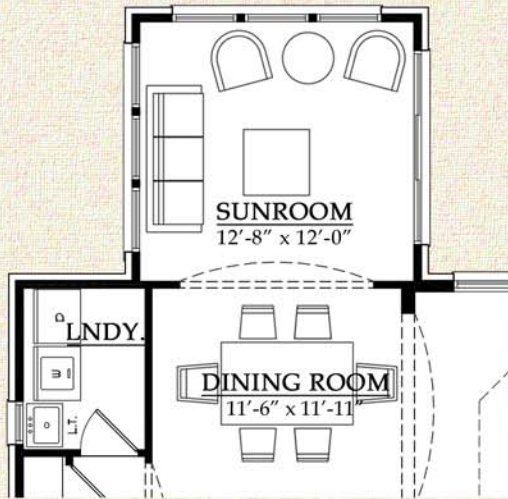


ARTIST RENDERINGS AND FLOOR PLANS ARE FOR ILLUSTRATION PURPOSES ONLY AND ARE SUBJECT TO CHANGE. THESE PLANS ARE NOT TO BE REPRODUCED, CHANGED, OR COPIED IN ANY FORM OR MANNER WHATSOEVER. WE RESERVE THE RIGHT TO MAKE CHANGES IN DESIGN, FEATURES AND OPTIONS WITHOUT NOTICE OR OBLIGATION. FLOOR PLAN DIMENSIONS AND SQUARE FOOTAGES ARE APPROXIMATE. NOTE: PLANS WILL VARY PER ELEVATION.

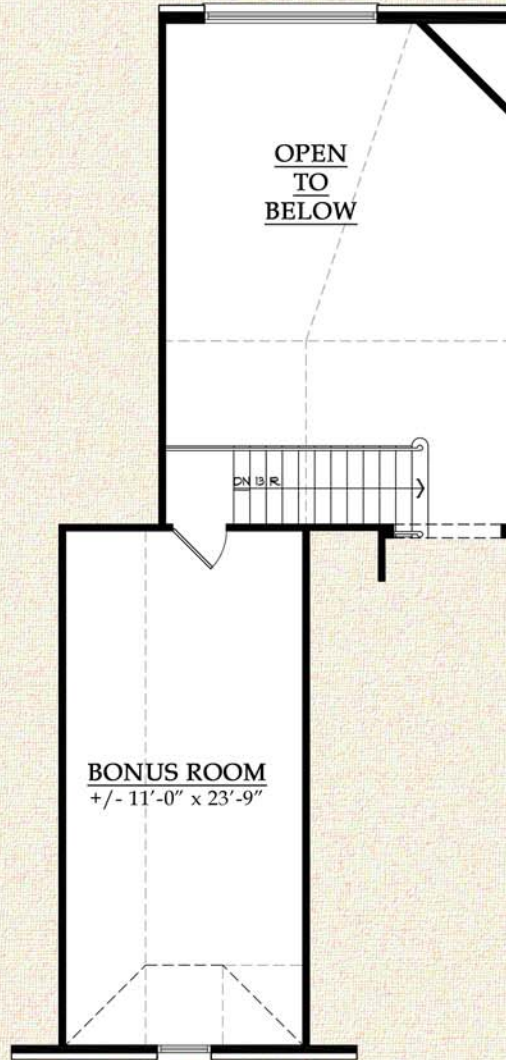
© 2014 MJC Companies®



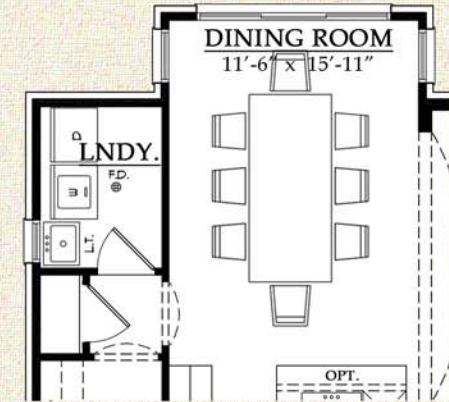
MARISA



OPT. SUNROOM
+173 SQ.FT.



OPT. BONUS ROOM
+287 SQ.FT.



OPT. 4' EXPANDED
DINING ROOM
+51 SQ.FT.



ARTIST RENDERINGS AND FLOOR PLANS ARE FOR ILLUSTRATION PURPOSES ONLY AND ARE SUBJECT TO CHANGE. THESE PLANS ARE NOT TO BE REPRODUCED, CHANGED, OR COPIED IN ANY FORM OR MANNER WHATSOEVER.
WE RESERVE THE RIGHT TO MAKE CHANGES IN DESIGN, FEATURES AND OPTIONS WITHOUT NOTICE OR OBLIGATION. FLOOR PLAN DIMENSIONS AND SQUARE FOOTAGES
ARE APPROXIMATE. NOTE: PLANS WILL VARY PER ELEVATION.

© 2014 MJC Companies®

