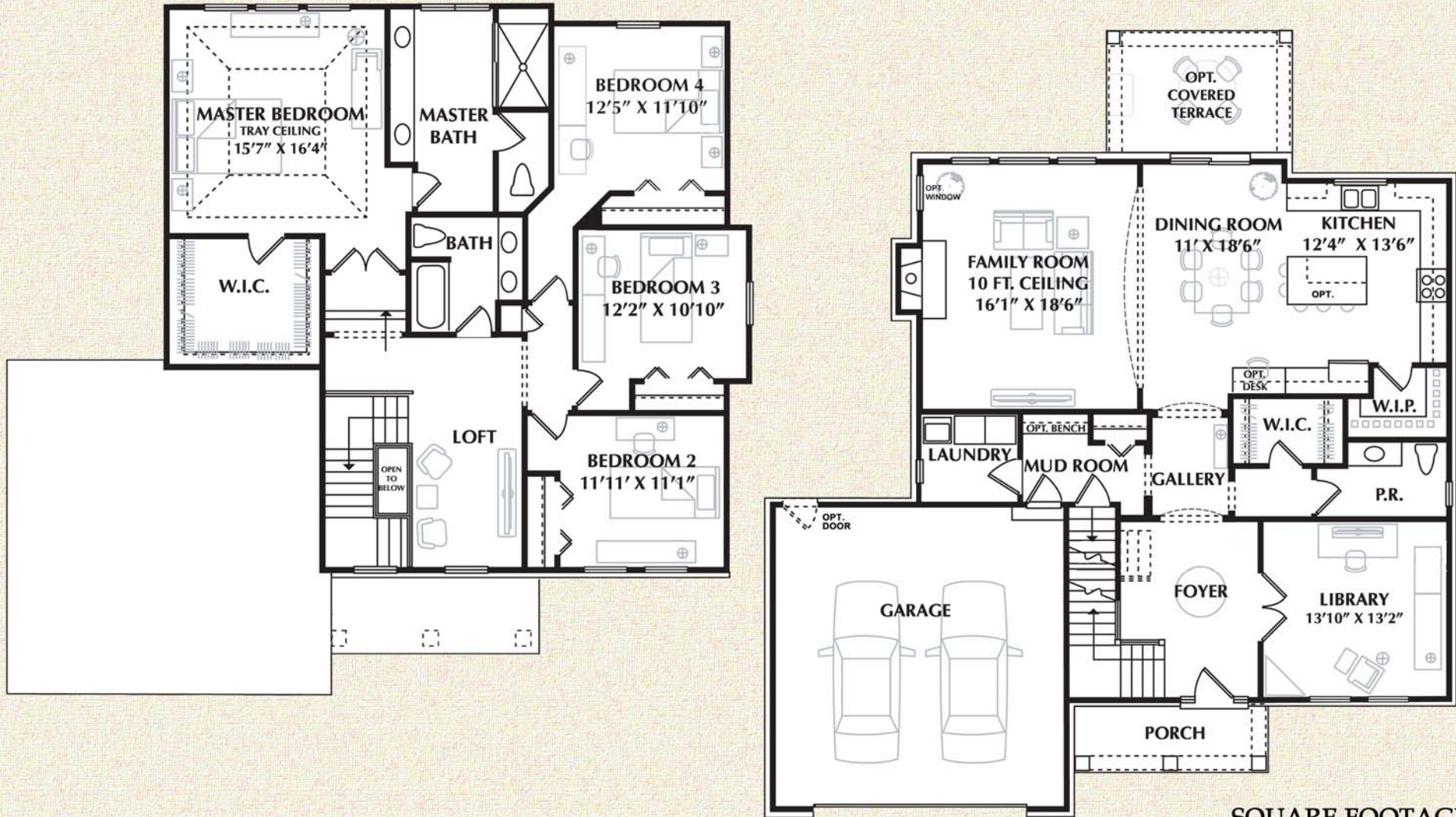


# TREADSTONE



## SQUARE FOOTAGE

FIRST FLOOR: 1,535 SQ. FT.  
 SECOND FLOOR: 1,420 SQ. FT.  
 TOTAL: 2,955 SQ. FT.  
 BONUS ROOM: 279 SQ. FT.

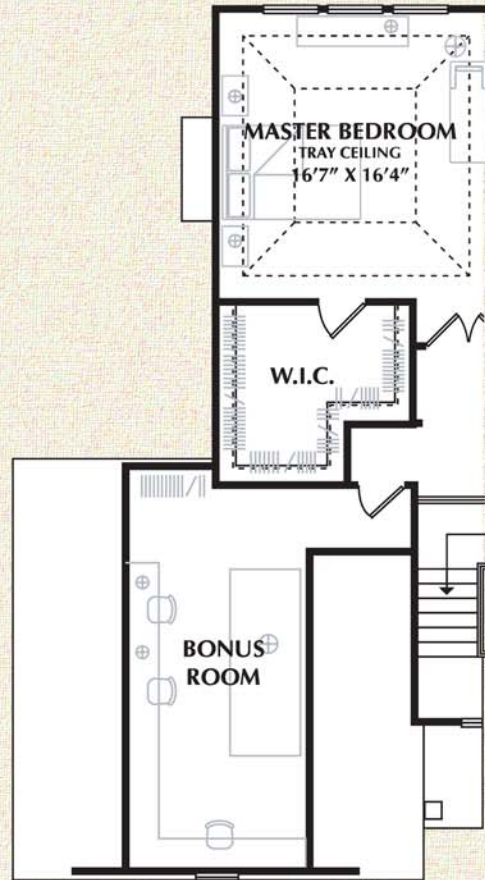
52'0" X 50'0" FOOTPRINT



ARTIST RENDERINGS AND FLOOR PLANS ARE FOR ILLUSTRATION PURPOSES ONLY AND ARE SUBJECT TO CHANGE. THESE PLANS ARE NOT TO BE REPRODUCED, CHANGED, OR COPIED IN ANY FORM OR MANNER WHATSOEVER. WE RESERVE THE RIGHT TO MAKE CHANGES IN DESIGN, FEATURES AND OPTIONS WITHOUT NOTICE OR OBLIGATION. FLOOR PLAN DIMENSIONS AND SQUARE FOOTAGES ARE APPROXIMATE. NOTE: PLANS WILL VARY PER ELEVATION.

© 2016 MJC Companies®

# TREADSTONE



OPTIONAL  
BONUS ROOM



OPTIONAL  
MASTER BATH



ARTIST RENDERINGS AND FLOOR PLANS ARE FOR ILLUSTRATION PURPOSES ONLY AND ARE SUBJECT TO CHANGE. THESE PLANS ARE NOT TO BE REPRODUCED, CHANGED, OR COPIED IN ANY FORM OR MANNER WHATSOEVER. WE RESERVE THE RIGHT TO MAKE CHANGES IN DESIGN, FEATURES AND OPTIONS WITHOUT NOTICE OR OBLIGATION. FLOOR PLAN DIMENSIONS AND SQUARE FOOTAGES ARE APPROXIMATE. NOTE: PLANS WILL VARY PER ELEVATION.

© 2016 MJC Companies®