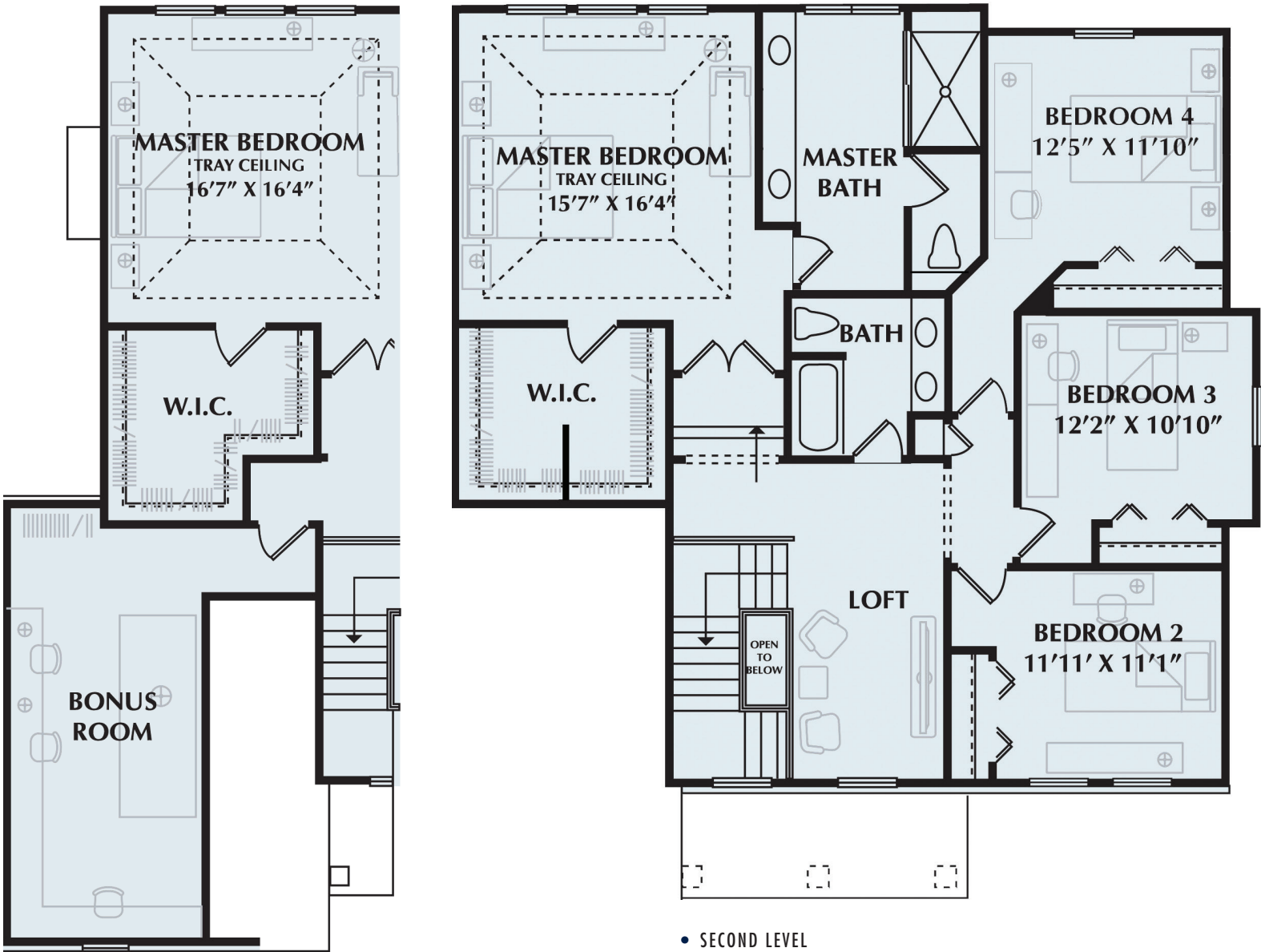


TREADSTONE

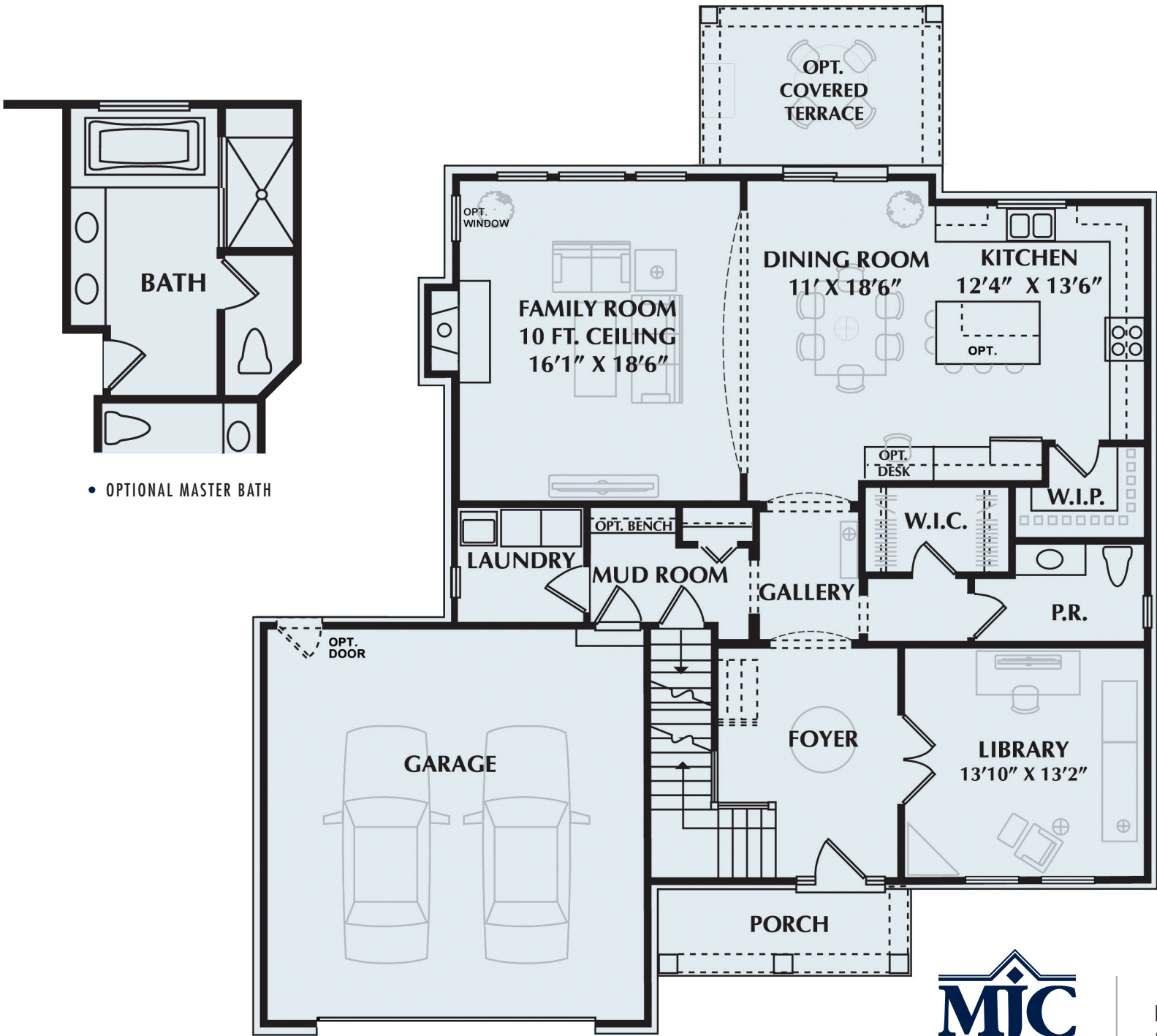
First Level	1,535 sf
Second Level	1,420 sf
Total	2,955 sf



Pass through the front door of the Treadstone and enter an expansive foyer that continues into a flowing, open space comprising the dining room, kitchen and family room. A cozy fireplace, varied ceiling heights and abundant windows all beckon a warm welcoming. Step out for some fresh air on the optional covered terrace. Rejuvenate and relax in the sensational step-up owner's suite with its spacious private bath. Three additional bedrooms and a large loft area overlooking the staircase are also found on the second level. An optional bonus room provides 219 square-feet of flex-space on the second level. The Treadstone is the most contemporary colonial design offered in this series.



• OPTIONAL BONUS ROOM
+279 SQ. FT.



• FIRST LEVEL



For Information Visit
MJCCompanies.com