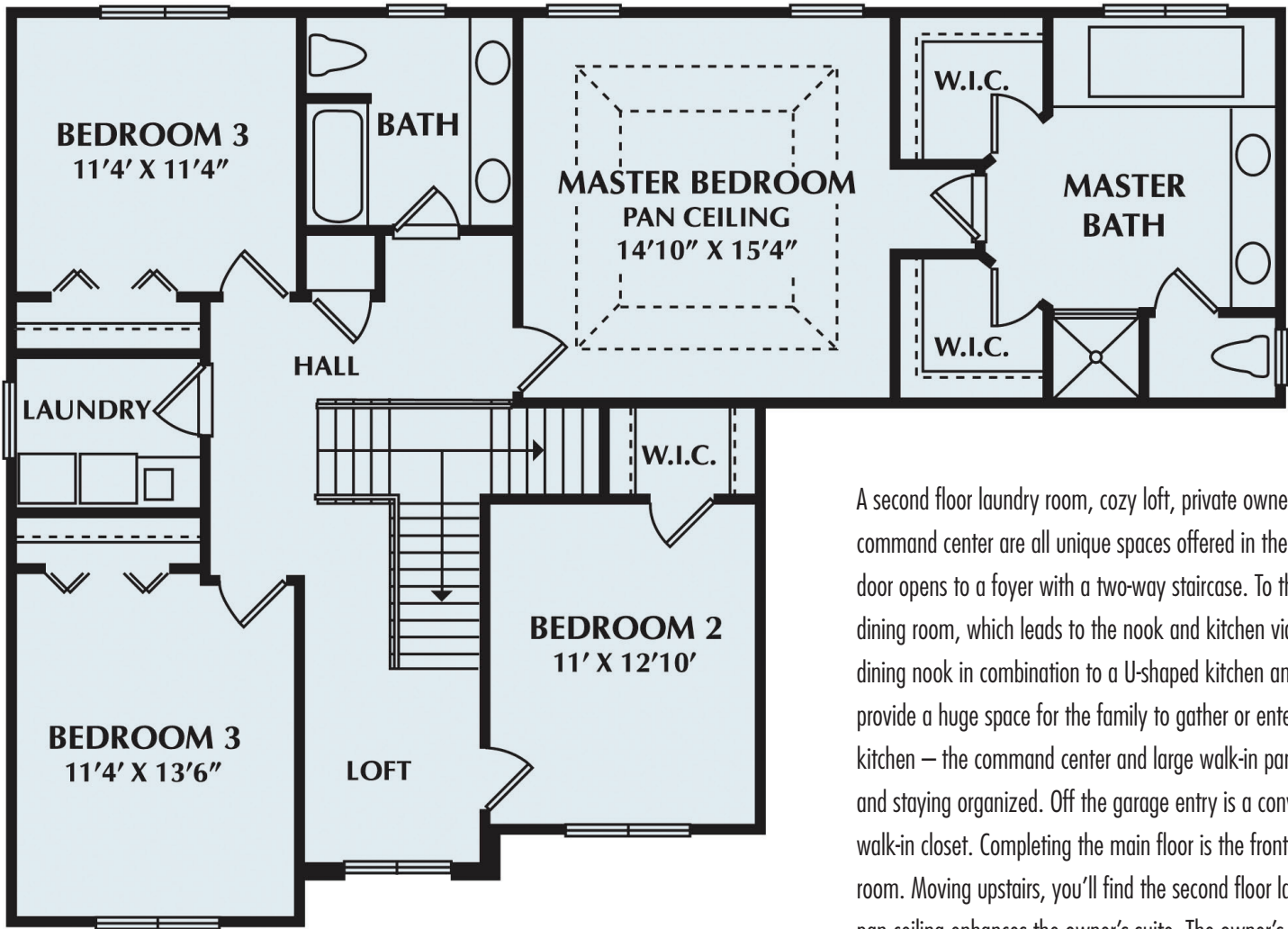


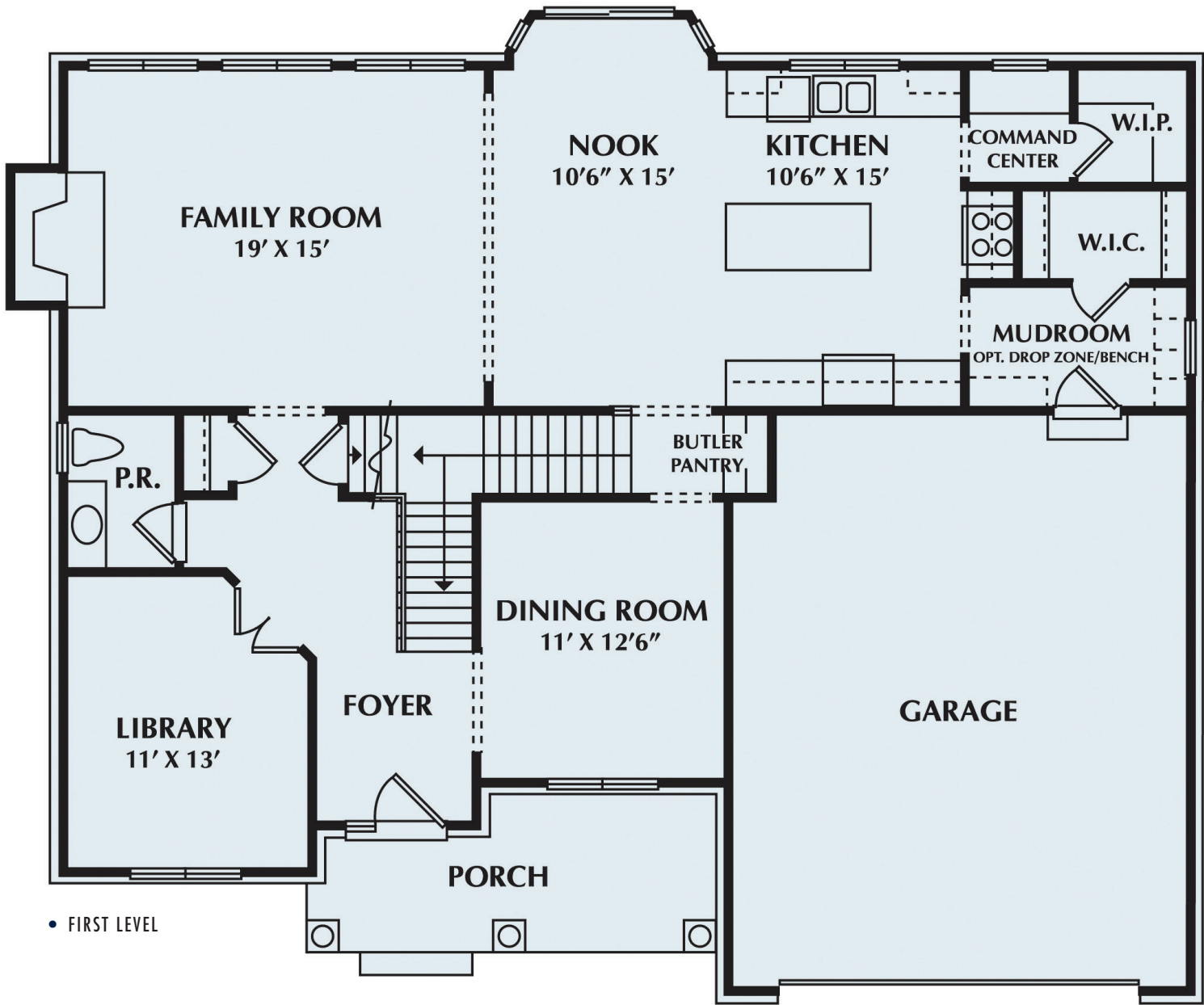
# VILLAGE MANOR II

First Level	1,437 sf
Second Level	1,384 sf
Total	2,821 sf



• SECOND LEVEL

A second floor laundry room, cozy loft, private owner's suite, covered front porch, and command center are all unique spaces offered in the Village Manor III colonial. The front door opens to a foyer with a two-way staircase. To the right of the foyer lies the formal dining room, which leads to the nook and kitchen via the butler's pantry. The large dining nook in combination to a U-shaped kitchen and open family room combine to provide a huge space for the family to gather or entertain. With ancillary rooms off the kitchen — the command center and large walk-in pantry — this space is ideal for storage and staying organized. Off the garage entry is a convenient mud room with a large walk-in closet. Completing the main floor is the front corner library and adjacent powder room. Moving upstairs, you'll find the second floor laundry, loft and four bedrooms. A pan ceiling enhances the owner's suite. The owner's bath includes separate his and hers walk-in closets, twin vanities, separate shower and soaking tub.



• FIRST LEVEL