



ELEVATION A

ABBEY

PAIRED RANCH HOME

First Level 1,485 sf

Optional Finished
Lower Level 806 sf

The Next Generation of Style

MJC's newest collection of paired homes offers more choices and included luxury features than ever before! First, the fresh elevations combine a sophisticated blend of brick, stone and classic architectural details. Secondly, there are two distinctive color palettes to provide the streetscape with a varied, yet harmoniously compatible style. However, the biggest news is hidden from view! The back of each home includes a private lanai with a studio ceiling to expand the living space outdoors.

ABBEY

First Level 1,485 sf
Optional Lower Level 806 sf

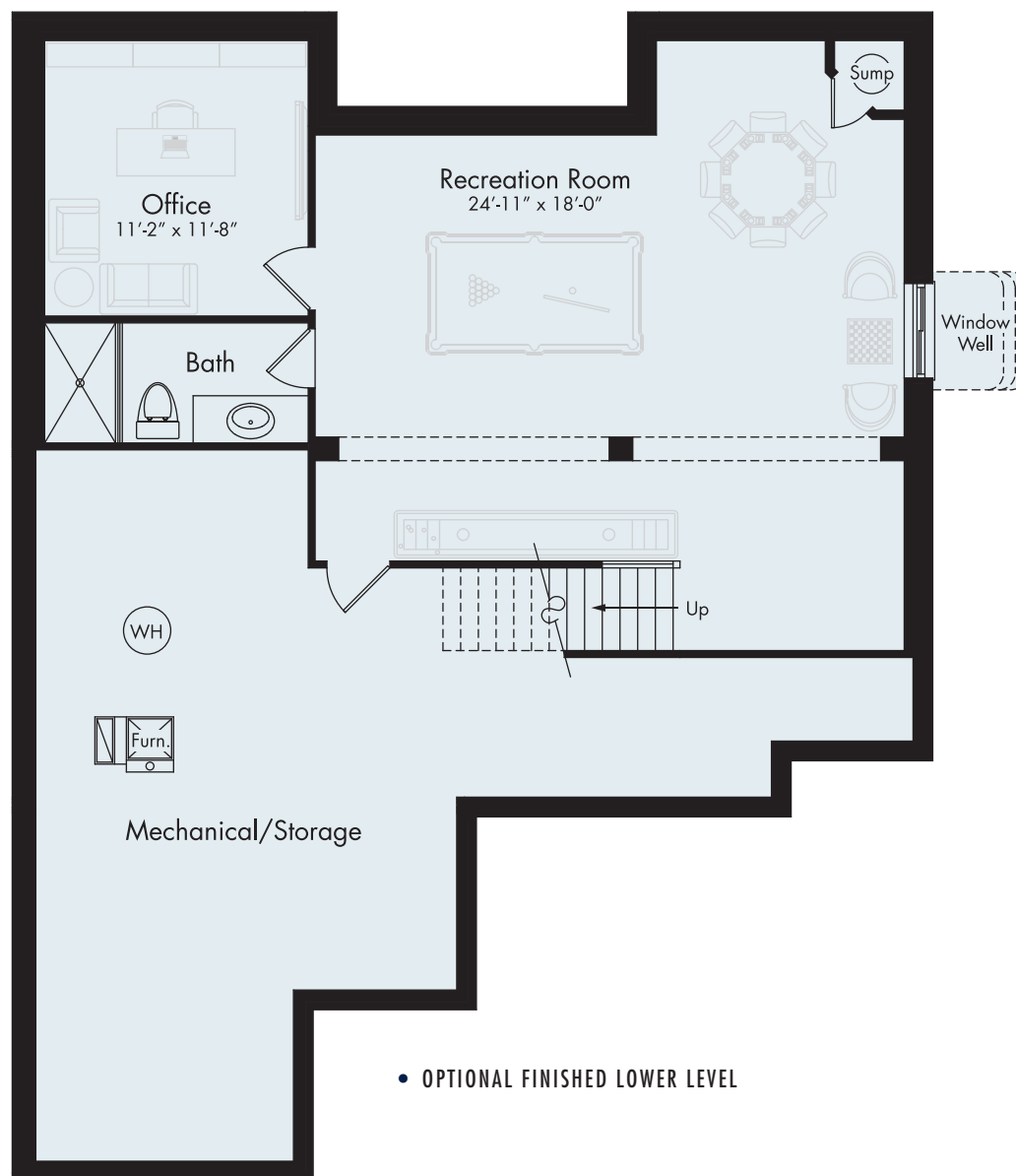


Ranch Home with Full Basement 2-Car Garage and Lanai

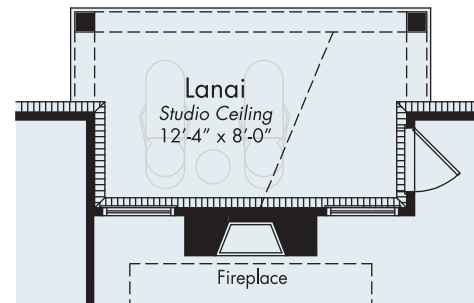
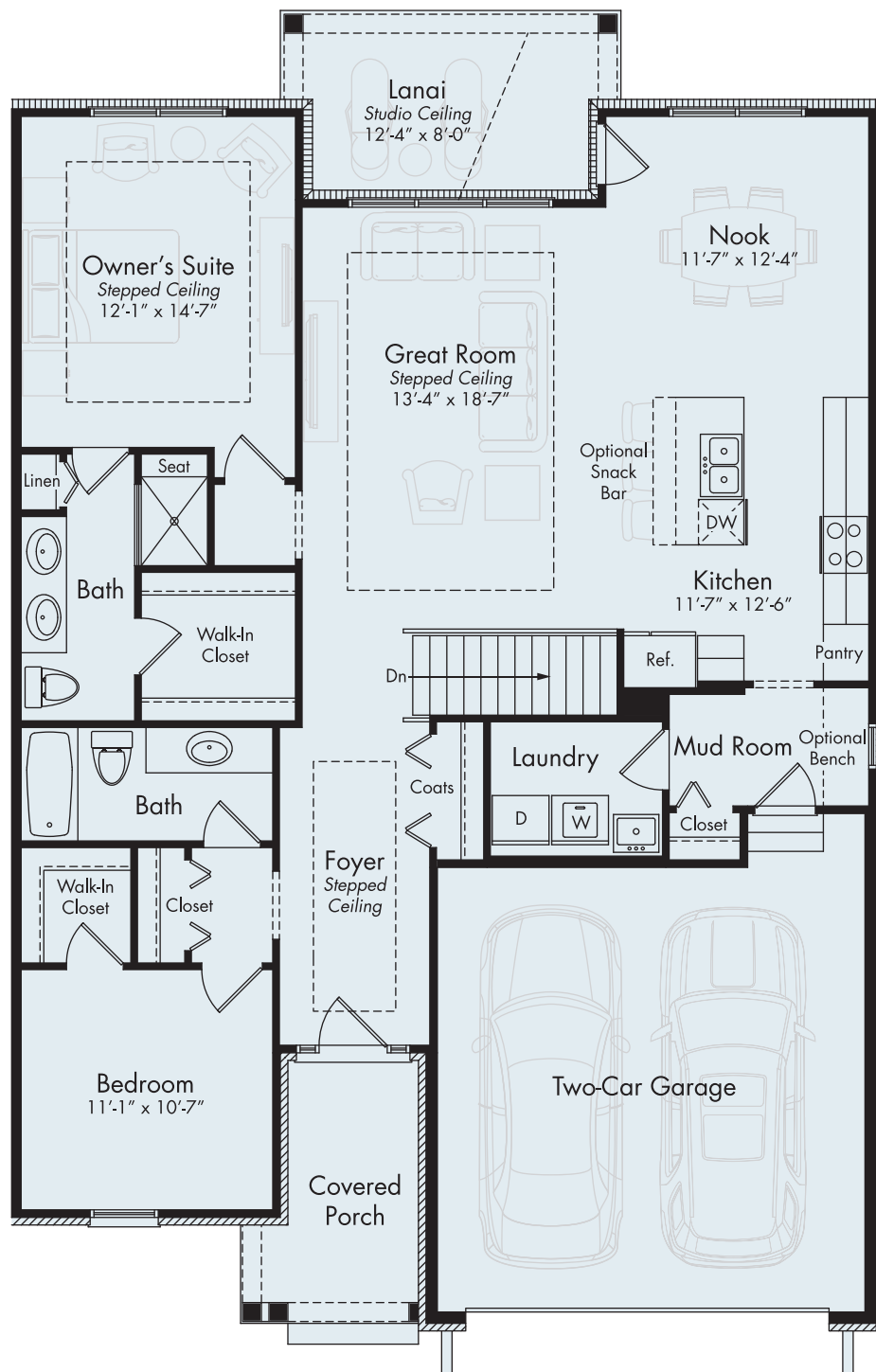
If you love the idea of knowing there's a place for everything, then this is the plan for you! There's lots of storage including walk-in closets, a full basement and two-car garage.

The open plan invites everyone to hang out in the great room, share a meal in the dining nook or at the kitchen island. When you want a breath of fresh air, step outdoors to the covered lanai. The owner's suite is a welcome retreat — removed from the main hub of activity and the second bedroom, which is tucked away off the foyer.

The lower level may be finished to include a recreation room and a quiet office. The main floor laundry is a step saver since it adjoins the mud room off the garage.



- OPTIONAL FINISHED LOWER LEVEL



- OPTIONAL FIREPLACE IN GREAT ROOM



For Information Visit
MJCompanies.com

All information contained herein was accurate at the time of publication. In order to maintain the high degree of quality and incorporate improvements with greater facilities and economy, we reserve the right to make changes in price, specifications, or materials or to change or discontinue models without notice or obligation. Floor plan dimensions are approximate. Renderings are artist's conception. 011620 © 2020 MJC Companies®



Your Best Decision. Ever.



For decades, MJC has been providing beautifully designed and artfully appointed paired ranch homes throughout Southeast Michigan. The company's fresh new collection of low-maintenance homes combines the simplicity of main-floor living with the option of finishing the spacious lower level and to add a second floor loft with an additional bedroom and full bath. No matter which floor plan style you prefer, this is living effortlessly.

MJC's new cutting-edge paired homes display a beautiful sense of traditional style and proportion. Each home includes professional landscaping with sod yards and a sprinkler system.

Now you can enjoy lock-and-leave freedom with landscape, lawn and snow removal included in your monthly association fees.



MJCompanies.com

All information contained herein was accurate at the time of publication. In order to maintain the high degree of quality and incorporate improvements with greater facilities and economy, we reserve the right to make changes in price, specifications, or materials or to change or discontinue models without notice or obligation. Floor plan dimensions are approximate. Renderings are artist's conception. 011620 © 2020 MJC 5215 Rochester LLC

