

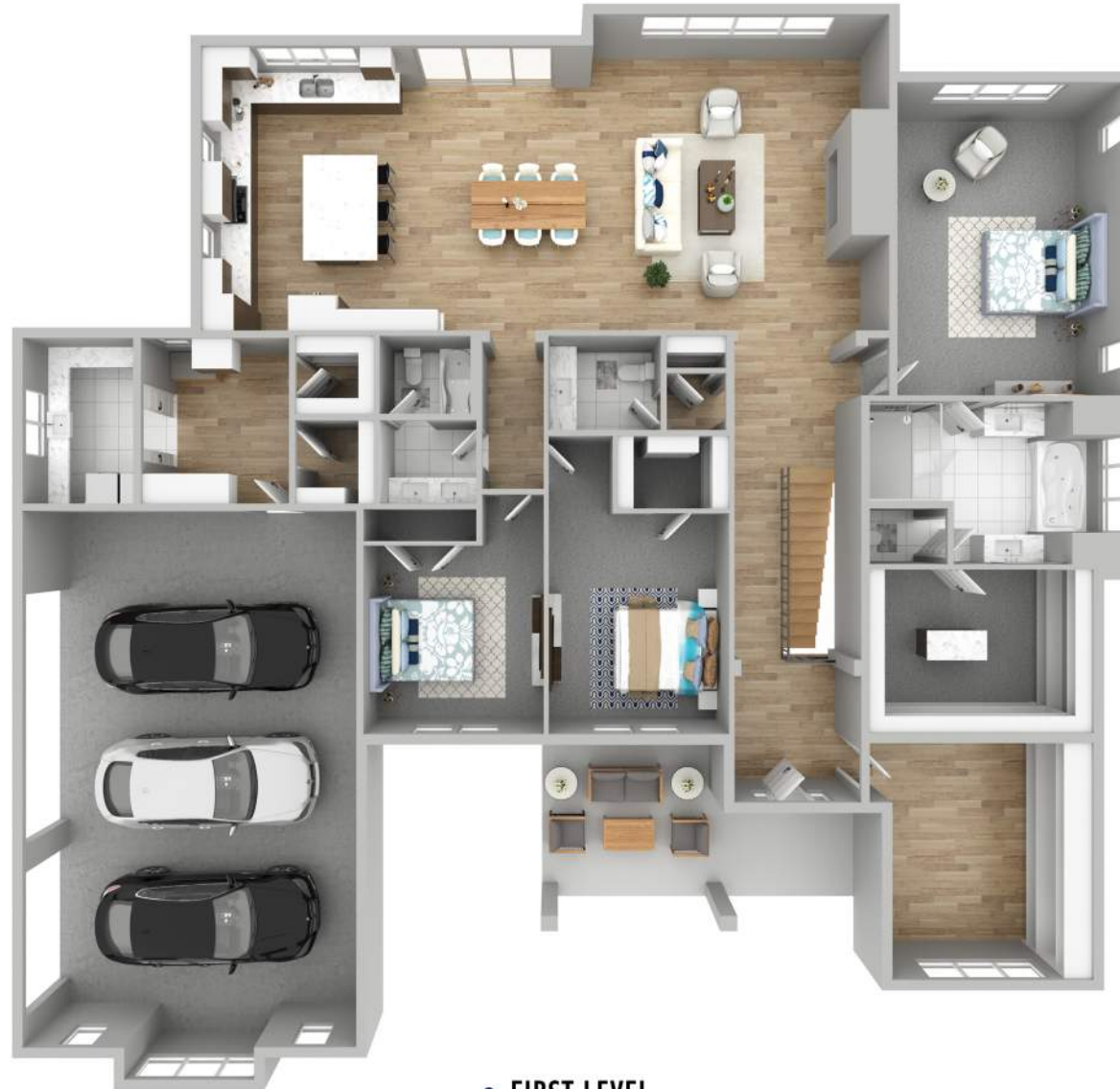
BIARRITZ

First Level

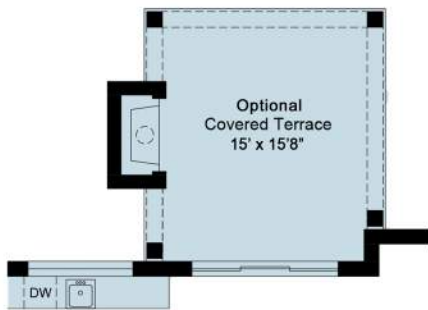
3,000 sf



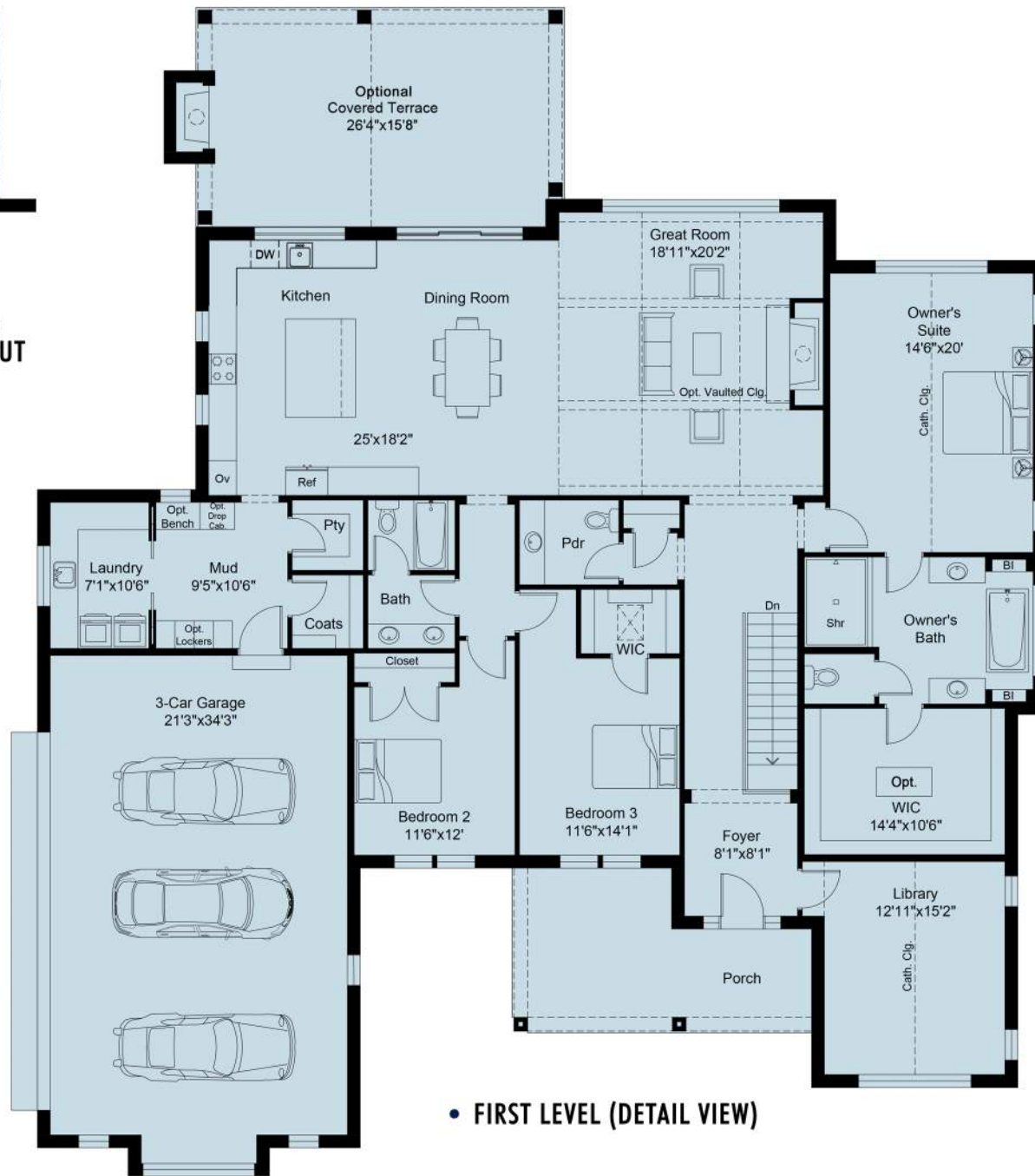
The Biarritz is beautiful inside and out, and can be configured to match the eye of the beholder. Starting with the outside, the Craftsman elevation features an extended covered front porch, and the Craftsman and French Country elevations each provide two options for the size of the optional rear covered terrace. On the inside, the general layout is a perfect match for any family looking to entertain throughout the large open kitchen, dining area and great room. As a split ranch, the owner's suite is separated from the other two bedrooms and offers two configurations for generously proportioned and accessorized bath and closet areas. Considering the convenience of all residents, the Biarritz includes a spacious mud area with optional bench/cubbies, generous secondary bedrooms, a laundry room with abundant cabinet and countertop space, large walk-in pantry, oversized island, and great room with elegant fireplace.



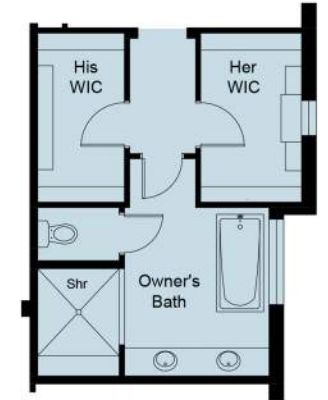
• FIRST LEVEL



• **ALTERNATE OPTIONAL COVERED TERRACE LAYOUT**



• **FIRST LEVEL (DETAIL VIEW)**



• **OPTIONAL OWNER'S BATH & CLOSET LAYOUT**

72' x 69' 8" FOOTPRINT
 9' MINIMUM to 11' CEILING HEIGHT
 WITH CATHEDRAL AND OPTIONAL
 VAULTED CEILINGS WHERE INDICATED



MJCCompanies.com

All information contained herein was accurate at the time of publication. In order to maintain the high degree of quality and incorporate improvements with greater facilities and economy, we reserve the right to make changes in price, specifications, or materials or to change or discontinue models without notice or obligation. Floor plan dimensions are approximate. Renderings are artist's conception. 032124 © 2024 MJC Companies®

