

BRIDGEVIEW

First Level	1,545 sf
Second Level	1,409 sf
Total	2,954 sf

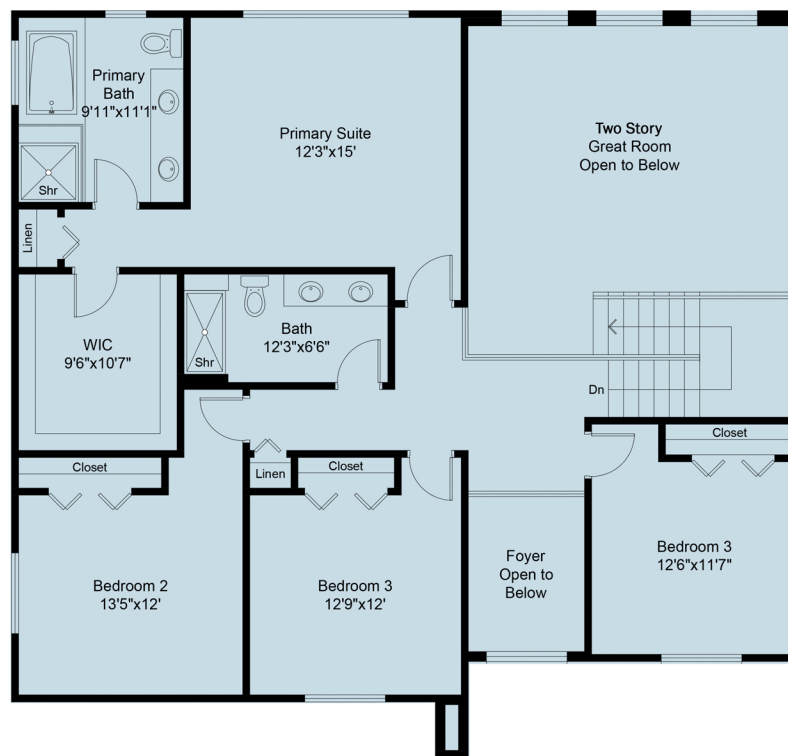


Discover the spacious and versatile Bridgeview Colonial, a floor plan meticulously designed for modern living and entertaining.

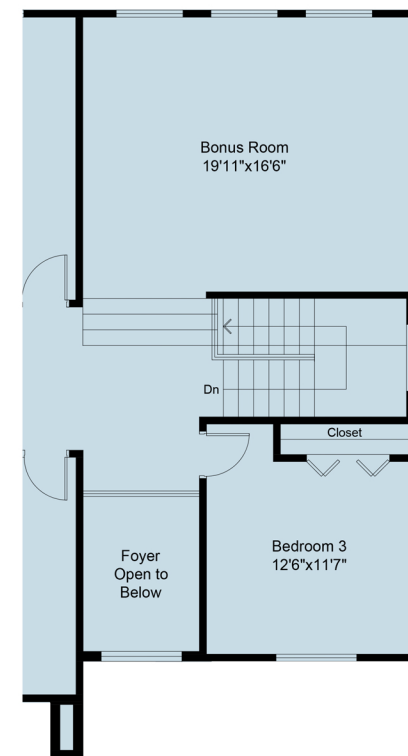
The inviting Foyer leads you into a thoughtfully laid-out first floor, featuring a dedicated Study perfect for work or quiet reflection. The heart of the home is the expansive two-story Great Room, seamlessly flowing into the Nook and a well-appointed Kitchen with a convenient Pantry. Practical spaces like the Mud Room and Laundry are located near the Garage, ensuring everyday convenience.

Upstairs, the Bridgeview Colonial offers private retreats, including an impressive Primary Suite featuring a luxurious Primary Bath and an expansive Walk-in Closet (WIC). This level also includes three additional generous Bedrooms and another full Bath, providing comfort and privacy for family or guests. The open balcony overlooks the overlooks the main level, Foyer and Great Room adding to the home's airy feel.

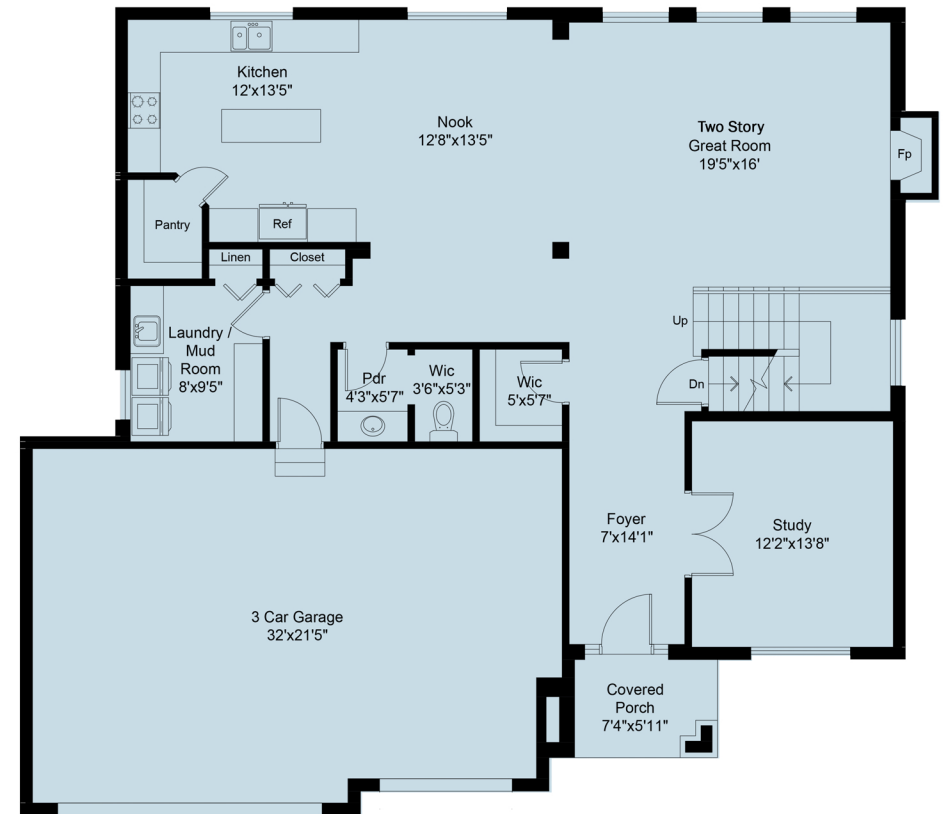
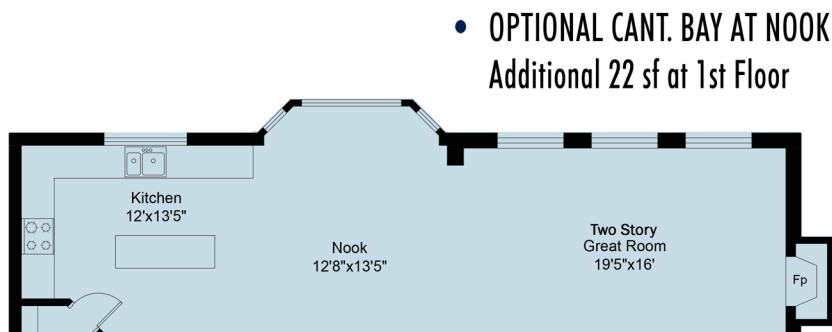
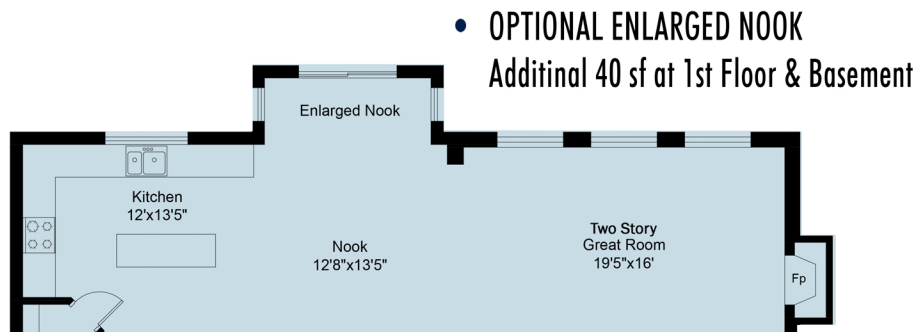
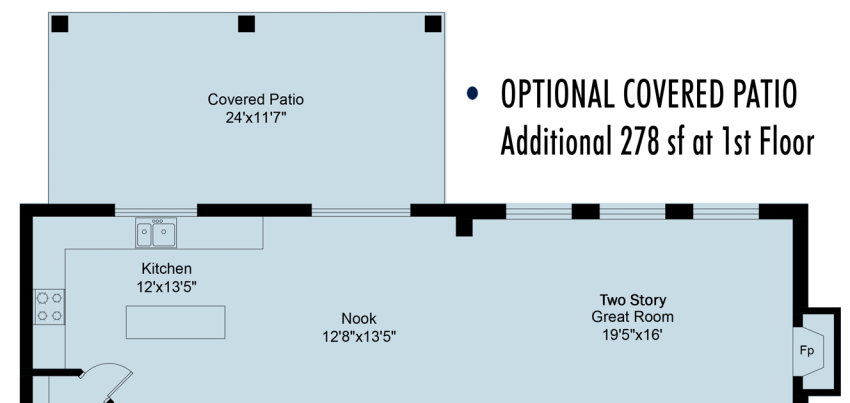
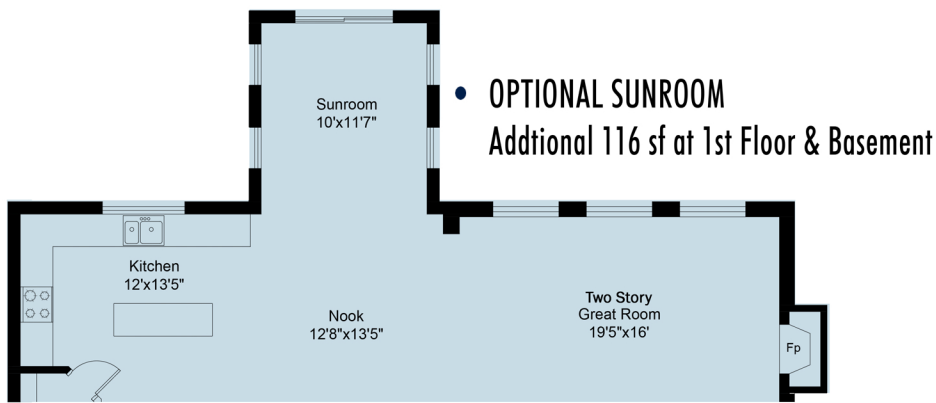
Personalize your Bridgeview Colonial with a range of available options, including an Optional Covered Patio for outdoor enjoyment , an Optional Cantilever Bay or Harvest Area at the Nook to expand your living space , and the possibility of an Optional Sunroom for abundant natural light. For even more flexibility, consider the Optional Bonus Room, perfect for a media room, play area, or additional bedroom. This floor plan truly offers the opportunity to create a home tailored to your lifestyle.



• SECOND LEVEL



• OPTIONAL BONUS ROOM Additional 356 sf



- **FIRST LEVEL**