



ELEVATION A

BRITTNEY

1.5 STORY HOME

First Level	1,485 sf
Second Level	450 sf
Total	1,935 sf
Optional Finished Lower Level	827 sf

The Next Generation of Style

MJC's newest collection of paired homes offers more choices and included luxury features than ever before! First, the fresh elevations combine a sophisticated blend of brick, stone and classic architectural details. Secondly, there are two distinctive color palettes to provide the streetscape with a varied, yet harmoniously compatible style. However, the biggest news is hidden from view! The back of each home includes a private lanai with a studio ceiling to expand the living space outdoors.

BRITTNEY

First Level	1,485 sf
Second Level	450 sf
Total	1,935 sf
Optional Finished Lower Level	827 sf



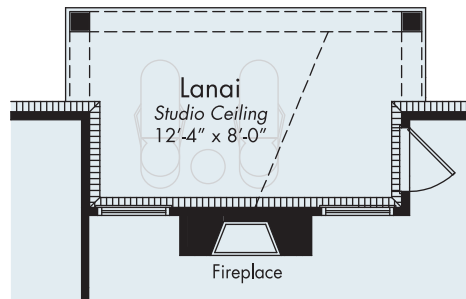
1.5 Story Home with Full Basement 2-Car Garage and Lanai

People need their space. So the more people you have in your life, the more you're going to love this ranch plan with a loft and third bedroom suite. This home also has an option for a finished basement with a flex space for movie watching or game-playing. There's even a space for a quiet home office.

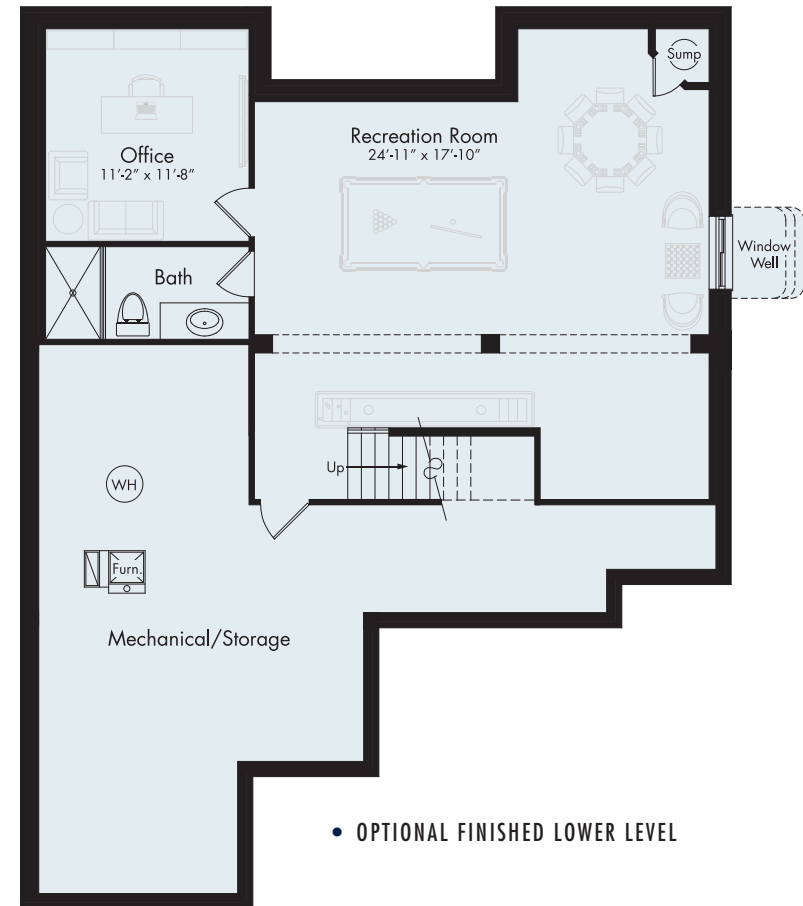
However, because this is a free-flowing ranch plan, most of your day will unfold upstairs. This is where you'll discover open and free-flowing spaces from the great room to the kitchen and out to the covered lanai with its studio ceiling.

Because we all need some alone time, the owner's suite and first floor bedroom were thoughtfully separated for privacy.

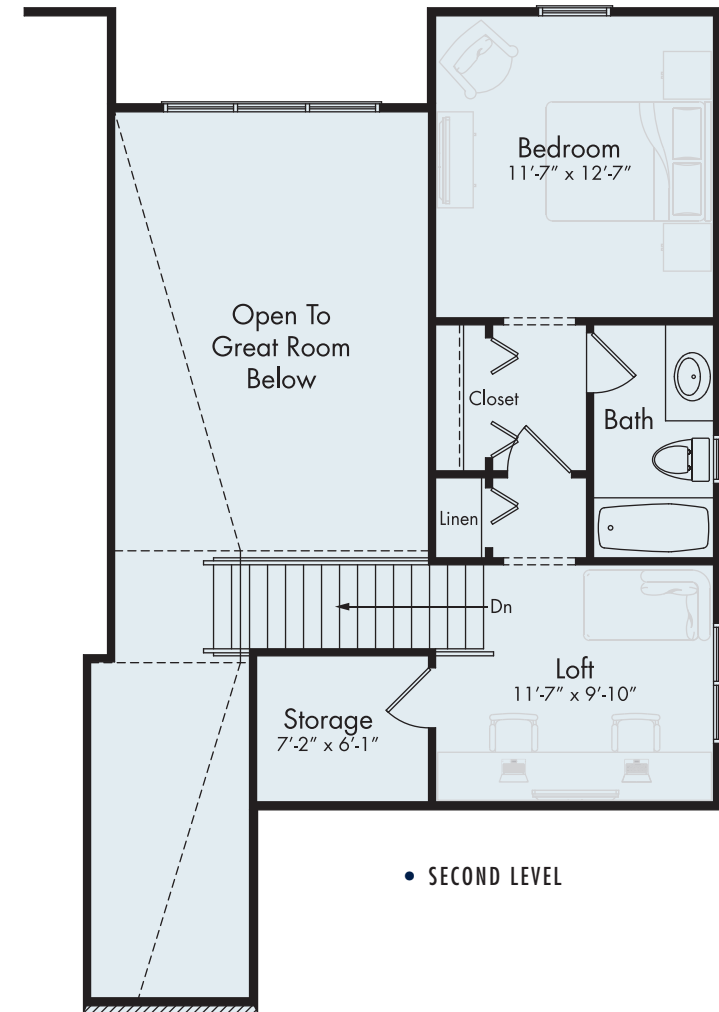
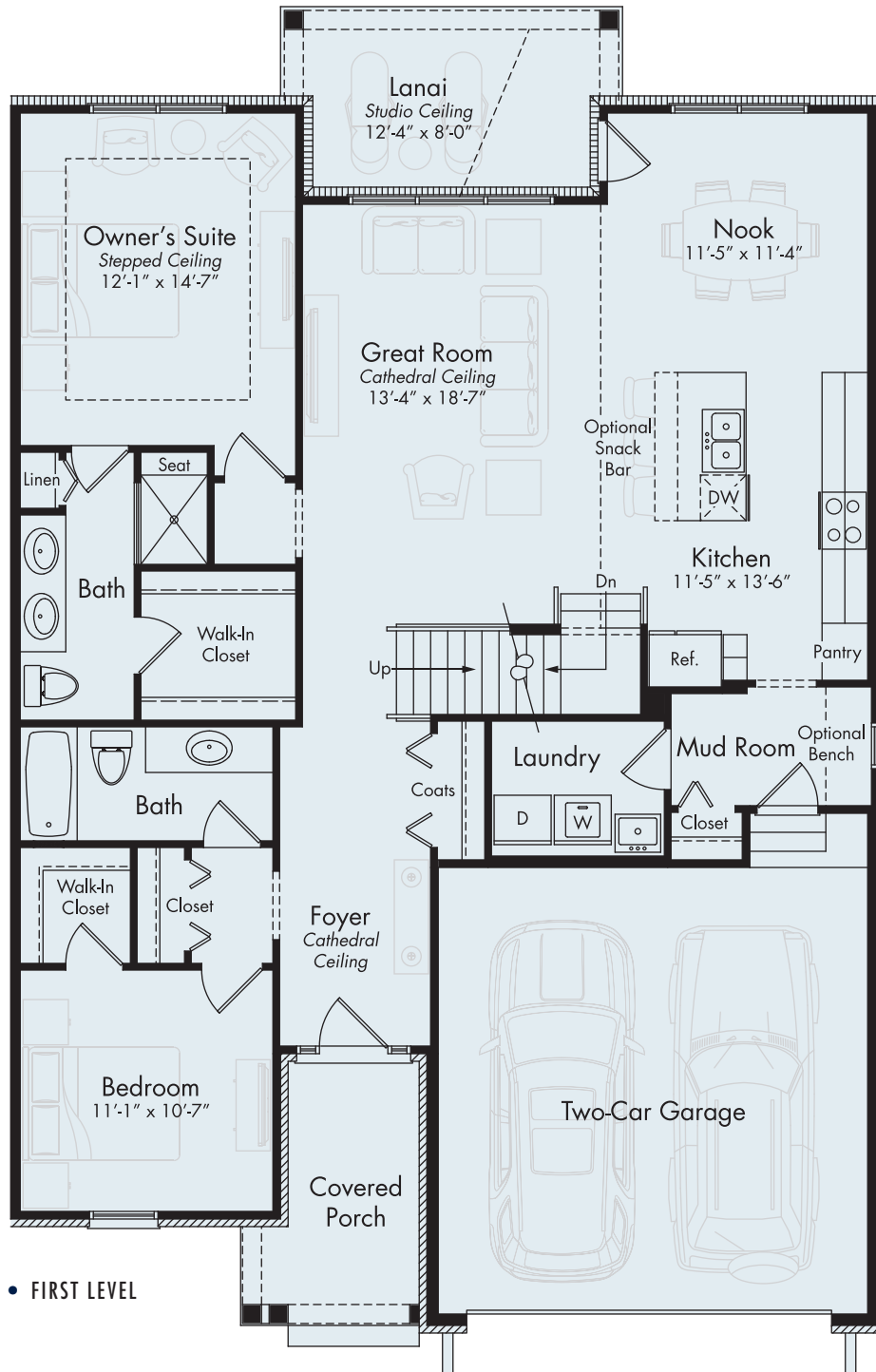
This version of the plan also includes a generous mud room off the garage with an adjoining laundry room.



- OPTIONAL FIREPLACE IN GREAT ROOM



- OPTIONAL FINISHED LOWER LEVEL



For Information Visit
MJCCompanies.com

All information contained herein was accurate at the time of publication. In order to maintain the high degree of quality and incorporate improvements with greater facilities and economy, we reserve the right to make changes in price, specifications, or materials or to change or discontinue models without notice or obligation. Floor plan dimensions are approximate. Renderings are artist's conception. 011620 © 2020 MJC Companies®



Your Best Decision. Ever.



For decades, MJC has been providing beautifully designed and artfully appointed paired ranch homes throughout Southeast Michigan. The company's fresh new collection of low-maintenance homes combines the simplicity of main-floor living with the option of finishing the spacious lower level and to add a second floor loft with an additional bedroom and full bath. No matter which floor plan style you prefer, this is living effortlessly.

MJC's new cutting-edge paired homes display a beautiful sense of traditional style and proportion. Each home includes professional landscaping with sod yards and a sprinkler system.

Now you can enjoy lock-and-leave freedom with landscape, lawn and snow removal included in your monthly association fees.



MJCompanies.com

All information contained herein was accurate at the time of publication. In order to maintain the high degree of quality and incorporate improvements with greater facilities and economy, we reserve the right to make changes in price, specifications, or materials or to change or discontinue models without notice or obligation. Floor plan dimensions are approximate. Renderings are artist's conception. 011620 © 2020 MJC 5215 Rochester LLC

