



CHASE

First Level

1,537 sf

Welcome To The Landings...

For those who seek a brand new home — where lawn care, snow removal and other time-consuming chores are handled by the homeowner's association, the Landings is a wise choice.

This is a unique opportunity for you to own a spacious home with modern design, two-car garage, full basement and deck at a surprisingly affordable price.

The Landings provides all these benefits, plus excellent Hartland Schools, lower township taxes and a highly accessible location. Best of all, you are just steps away from the Shops at Waldenwood, the area's premier retail center.

CHASE

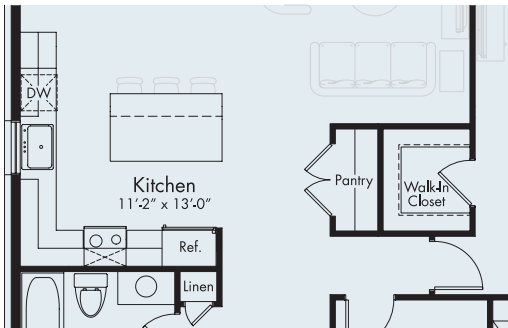
First Level

1,537 sf

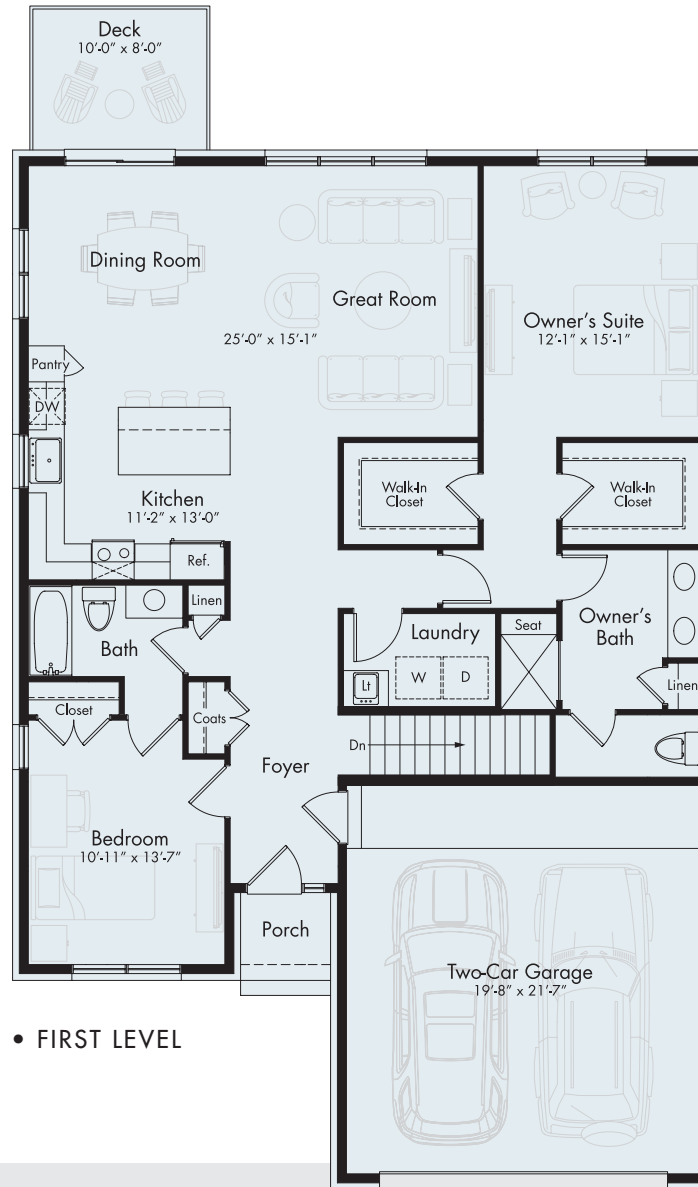
The Chase ranch evokes the convenience of one-level living. The kitchen, dining room and great room have an open design for connecting with family and friends with an outdoor deck.

The owner's suite includes two large walk-in closets and a private bath. The laundry room is right outside to streamline the daily chores. A second bedroom, located off the foyer, has a direct connection to the full bath.

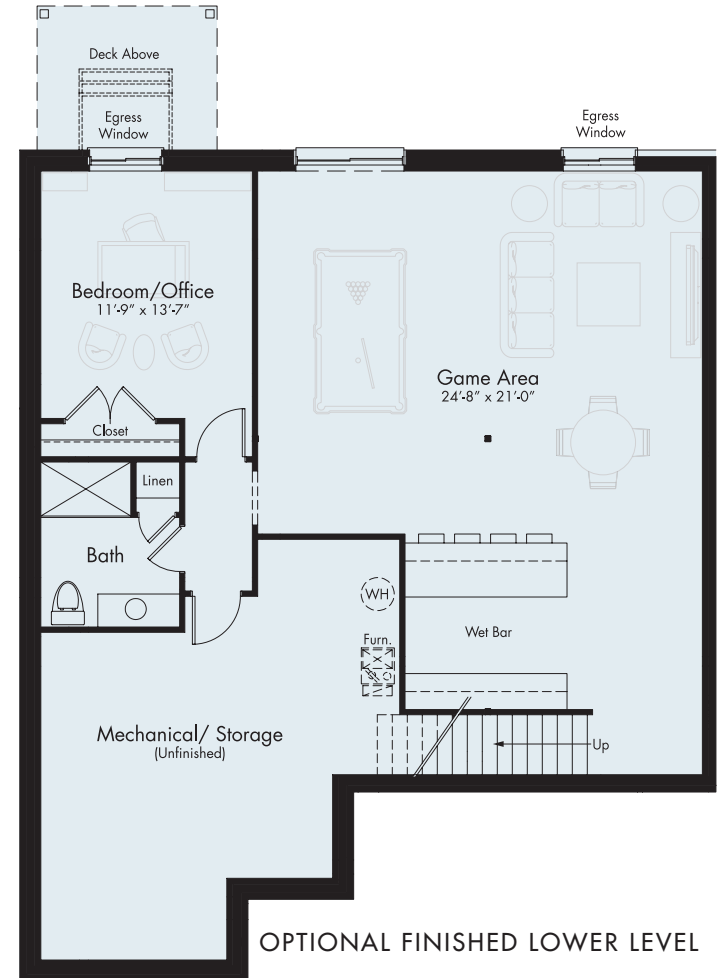
Looking for a private office or recreation room, consider finishing the full basement for the additional space you need.



• FIRST LEVEL - OPTIONAL PANTRY



• FIRST LEVEL



OPTIONAL FINISHED LOWER LEVEL



MJCCompanies.com

All information contained herein was accurate at the time of publication. In order to maintain the high degree of quality and incorporate improvements with greater facilities and economy, we reserve the right to make changes in price, specifications, or materials or to change or discontinue models without notice or obligation. Floor plan dimensions are approximate. Renderings are artist's conception. 110624 © 2024 MJC Fox Ridge LLC

