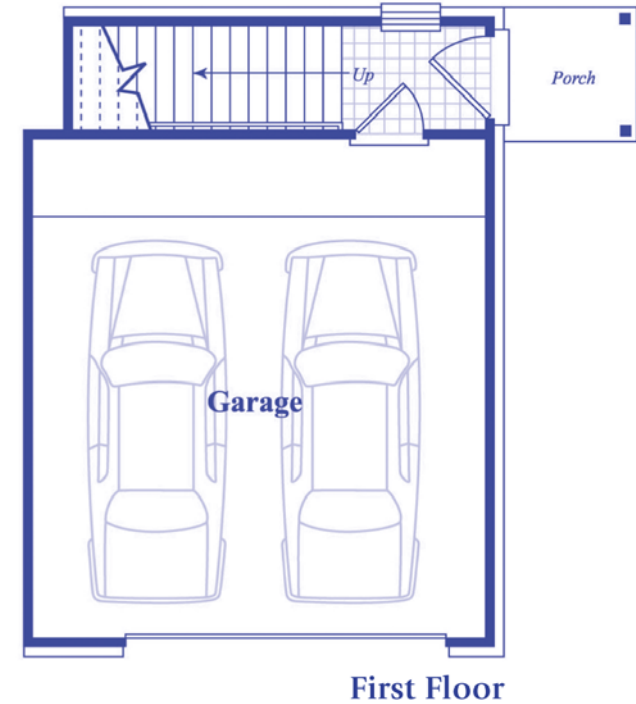
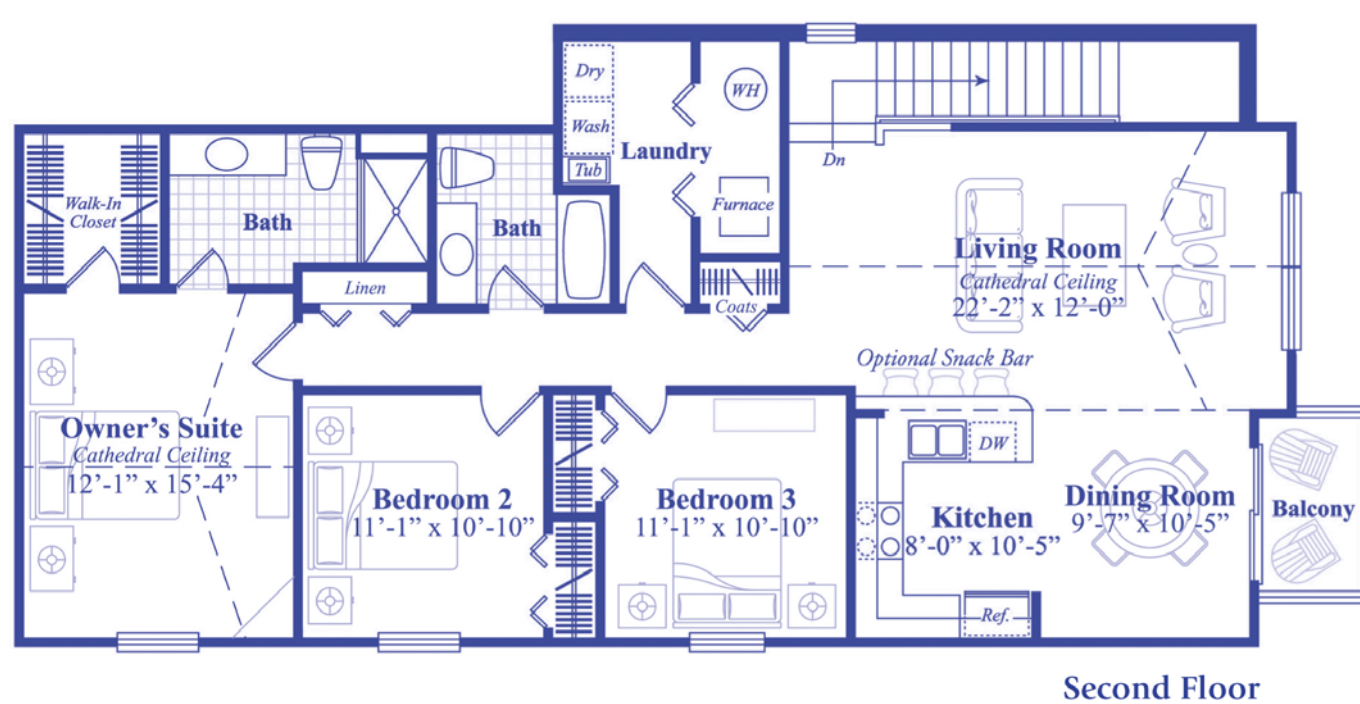


MANORS AT NORTH POINTE

FLOOR PLANS

Chesterfield III

1,470 Sq. Ft. Ranch



This cozy 3-bedroom condominium home exudes the essence of carefree living. A covered porch opens to the staircase leading up to a spacious living room with a soaring cathedral ceiling. Sliding glass doors reveal a balcony just off the dining room, creating a perfect spot for a late evening supper and stargazing. The convenient laundry area is just steps from a full bath, handy linen closet and the bedrooms. A cathedral ceiling in the owner's suite adds an elegant touch, enhanced by the walk-in closet and private bath. The main level two-car garage provides both ample storage space and easy access to the upper level living area.

(586) 421-2078
www.mjccompanies.com



© Copyright MJC Chesterfield LLC. Exclusive rights of the copyright owner are enforced.

ALL INFORMATION CONTAINED HEREIN WAS ACCURATE AT THE TIME OF PUBLICATION. IN ORDER TO MAINTAIN THE HIGH DEGREE OF QUALITY AND INCORPORATE MANAGEMENT WITH GREATER FACILITY AND ECONOMY, WE RESERVE THE RIGHT TO MAKE CHANGES IN PRICE, FEATURES, SPECIFICATIONS, MATERIALS OR TO CHANGE OR DISCONTINUE MODELS WITHOUT NOTICE OR OBLIGATION. RENDERING AND PHOTOGRAPHS ARE ARTIST'S CONCEPTION AND ARE ONLY REPRESENTATIVE.