



HUNTERS RIDGE
LANDINGS

CREST

First Level	670 sf
Second Level	757 sf
Total	1,427 sf

Welcome To The Landings...

For those who seek a brand new home — where lawn care, snow removal and other time-consuming chores are handled by the homeowner's association, the Landings is a wise choice.

This is a unique opportunity for you to own a spacious ranch, loft, or two-story home with modern design, two-car garage, full basement and private deck at a surprisingly affordable price.

The Landings provides all these benefits, plus excellent Hartland Schools, lower township taxes and a highly accessible location. Best of all, you are just steps away from the Shops at Waldenwood, the area's premier retail center.

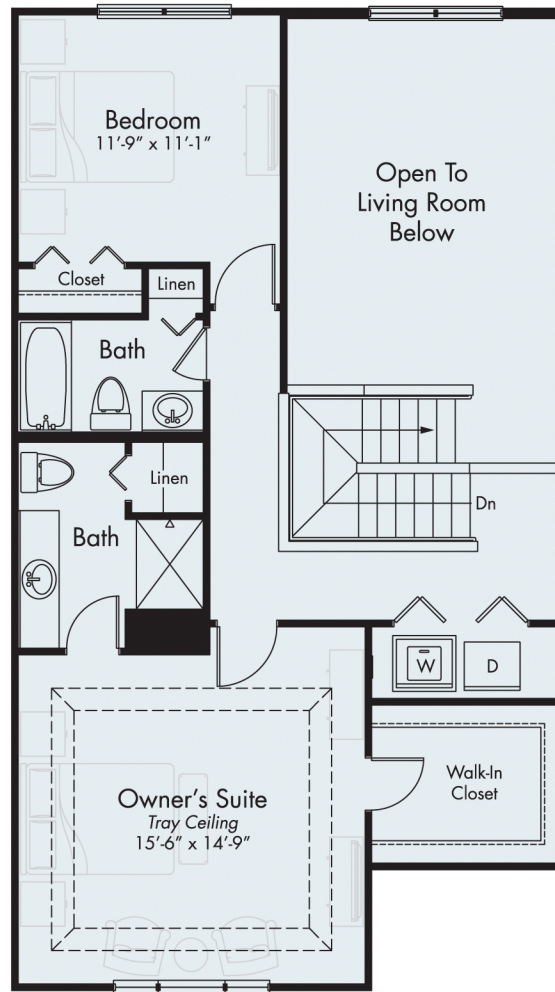
CREST

First Level	670 sf
Second Level	757 sf
Total	1,427 sf

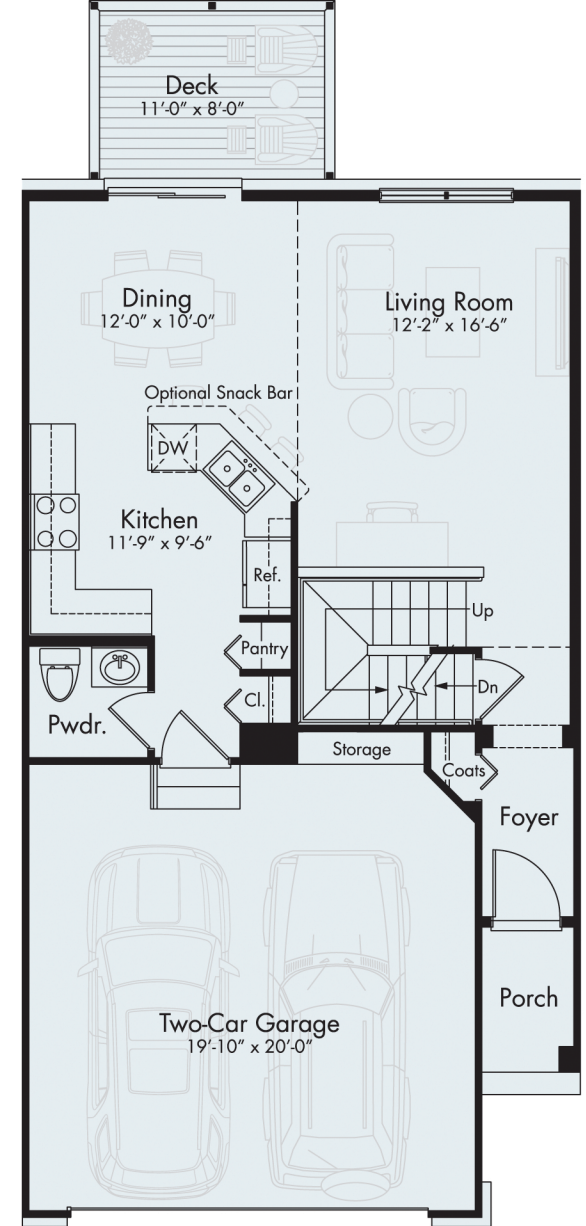
Enter your spacious new condominium home from your two-car garage or private front porch. The two-story living room offers plenty of room to stretch out, plus an optional fireplace. A step-saving kitchen surrounds you with conveniences, including a snack bar, pantry and powder room. The dining room opens to a private deck.

Upstairs, there is space for a full-size washer and dryer, plus two bedrooms and two full baths. The owner's suite comes with an elegant tray ceiling, walk-in closet and private bath with a linen closet.

The two-car garage opens to a powder room, closet and pantry. The Crest also includes a full basement. So kick off your shoes and feel right at home!



• SECOND LEVEL



• FIRST LEVEL