

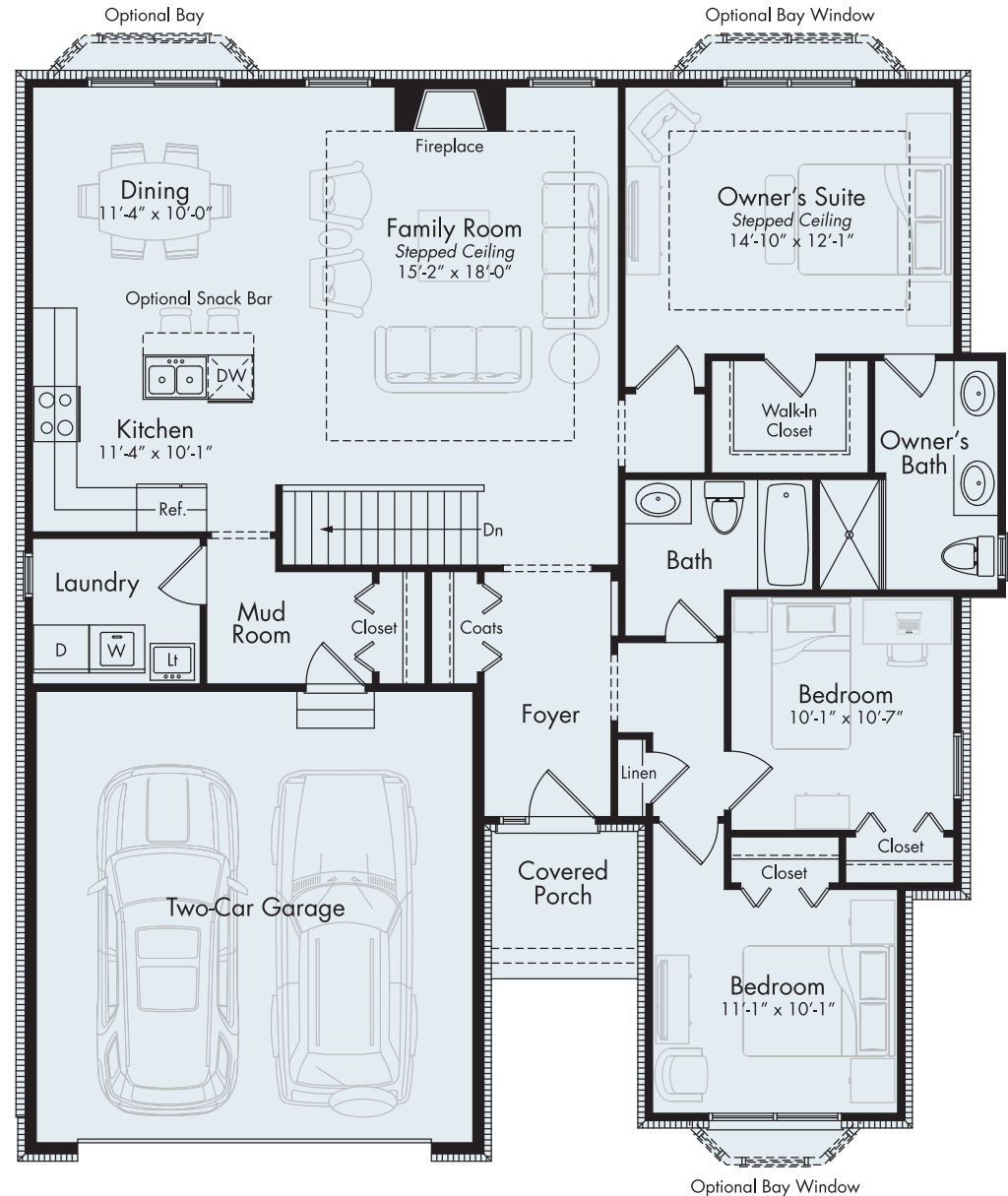
# CYPRESS

First Level 1,539 sf



If you're looking for the perfect ranch floor plan with no wasted space, then the Cypress is ideal for you! The open island kitchen, dining area with its optional bay window, and family room with a cozy fireplace, will keep your family together and enhance the connections during special times hosted at your home. The Cypress also keeps privacy in mind with the elegant owner's suite and two additional bedrooms and a full bath nicely separated from the living space. The 2-car garage opens to a large mud room with a closet and adjacent laundry room.

*All information contained herein was accurate at the time of publication. In order to maintain the high degree of quality and incorporate improvements with greater facilities and economy, we reserve the right to make changes in price, specifications, or materials or to change or discontinue models without notice or obligation. Floor plan dimensions are approximate. Renderings are artist's conception. 021820 © 2020 MJC Companies*



• FIRST LEVEL



For Information Visit  
[MJCCompanies.com](http://MJCCompanies.com)

