

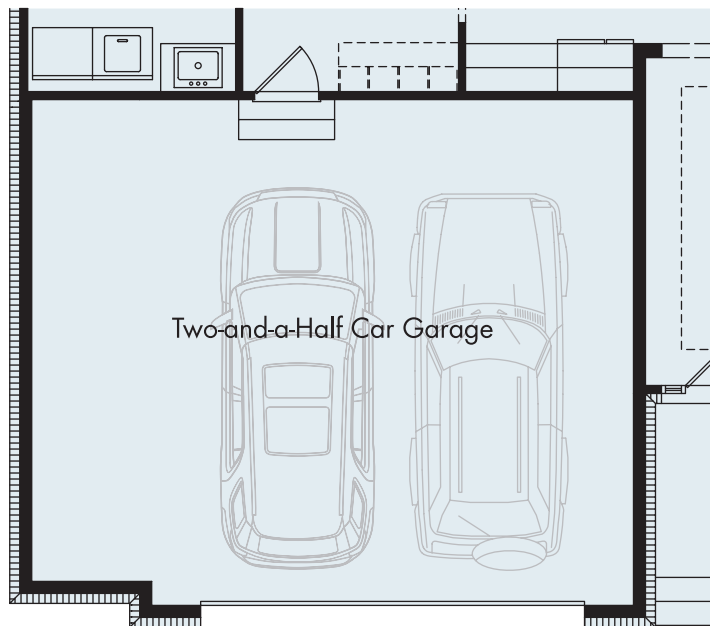
EASTWIND

First Level 1,848 sf

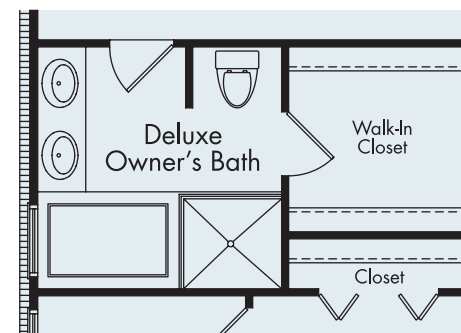


Love the open layouts offered by modern ranch designs, but want more space? The Eastwind is the floor plan for you – with no wasted space. The kitchen, with its oversized island, is the heart of the home with the adjoining dining and family room and a cozy fireplace, abundant windows and stepped ceiling. This creative space will keep your guests well entertained during special occasions.

Two bedrooms are tucked away off the foyer with a central bath to share. An owner's suite offers an extra measure of privacy and elegance with its stepped ceiling, spacious bath and an optional soaking tub and large walk-in closet. The garage offers options for 2.5-cars and 3-cars, opens to a mud room with optional bench and lockers and a central laundry room.

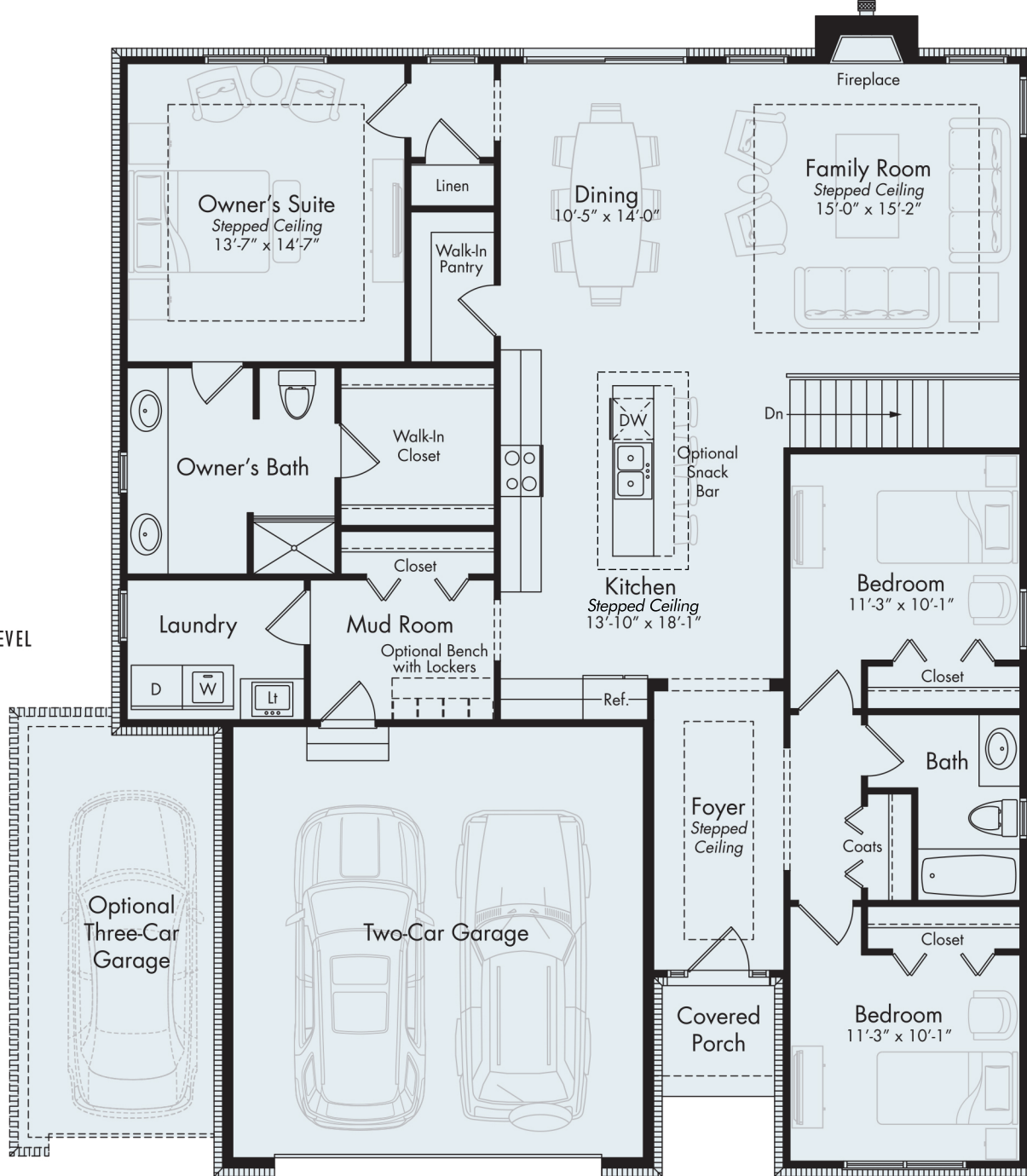


• OPTIONAL TWO-AND-A-HALF CAR GARAGE



• OPTIONAL DELUXE OWNER'S BATH

• FIRST LEVEL



For Information Visit
MJCCompanies.com

All information contained herein was accurate at the time of publication. In order to maintain the high degree of quality and incorporate improvements with greater facilities and economy, we reserve the right to make changes in price, specifications, or materials or to change or discontinue models without notice or obligation. Floor plan dimensions are approximate. Renderings are artist's conception. 060821 © 2021 MJC Companies

