



ENCLAVE

First Level 1,432 sf

Welcome To The Landings...

For those who seek a brand new home — where lawn care, snow removal and other time-consuming chores are handled by the homeowner's association, the Landings is a wise choice.

This is a unique opportunity for you to own a spacious ranch, loft, or two-story home with modern design, two-car garage, full basement and private deck at a surprisingly affordable price.

The Landings provides all these benefits, plus excellent Hartland Schools, lower township taxes and a highly accessible location. Best of all, you are just steps away from the Shops at Waldenwood, the area's premier retail center.

ENCLAVE

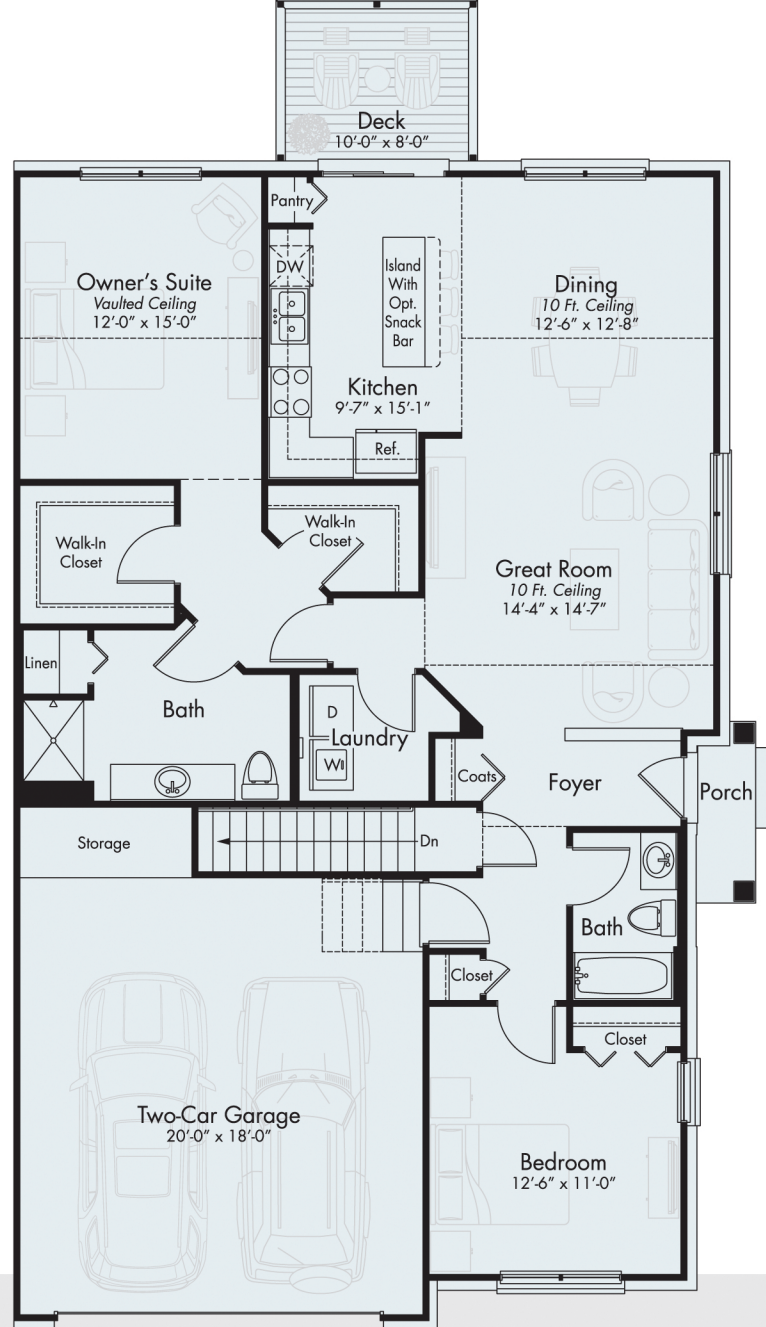
First Level

1,432 sf

The Enclave evokes all the qualities one comes to expect from the perfect ranch condo. Open design with lofty 10-foot and vaulted ceilings add to the captivating appeal. The great room, dining room and kitchen are all flooded with natural light. A L-shaped kitchen opens to a private deck and offers the option of an island with a snack bar.

A spacious owner's suite includes twin walk-in closets and a private bath. The second bedroom adjoins another full bath. A two-car garage, convenient laundry room and full basement expand the spaciousness.

• FIRST LEVEL



MJCCompanies.com

All information contained herein was accurate at the time of publication. In order to maintain the high degree of quality and incorporate improvements with greater facilities and economy, we reserve the right to make changes in price, specifications, or materials or to change or discontinue models without notice or obligation. Floor plan dimensions are approximate. Renderings are artist's conception. 071619 © 2019 MJC Fox Ridge LLC

