

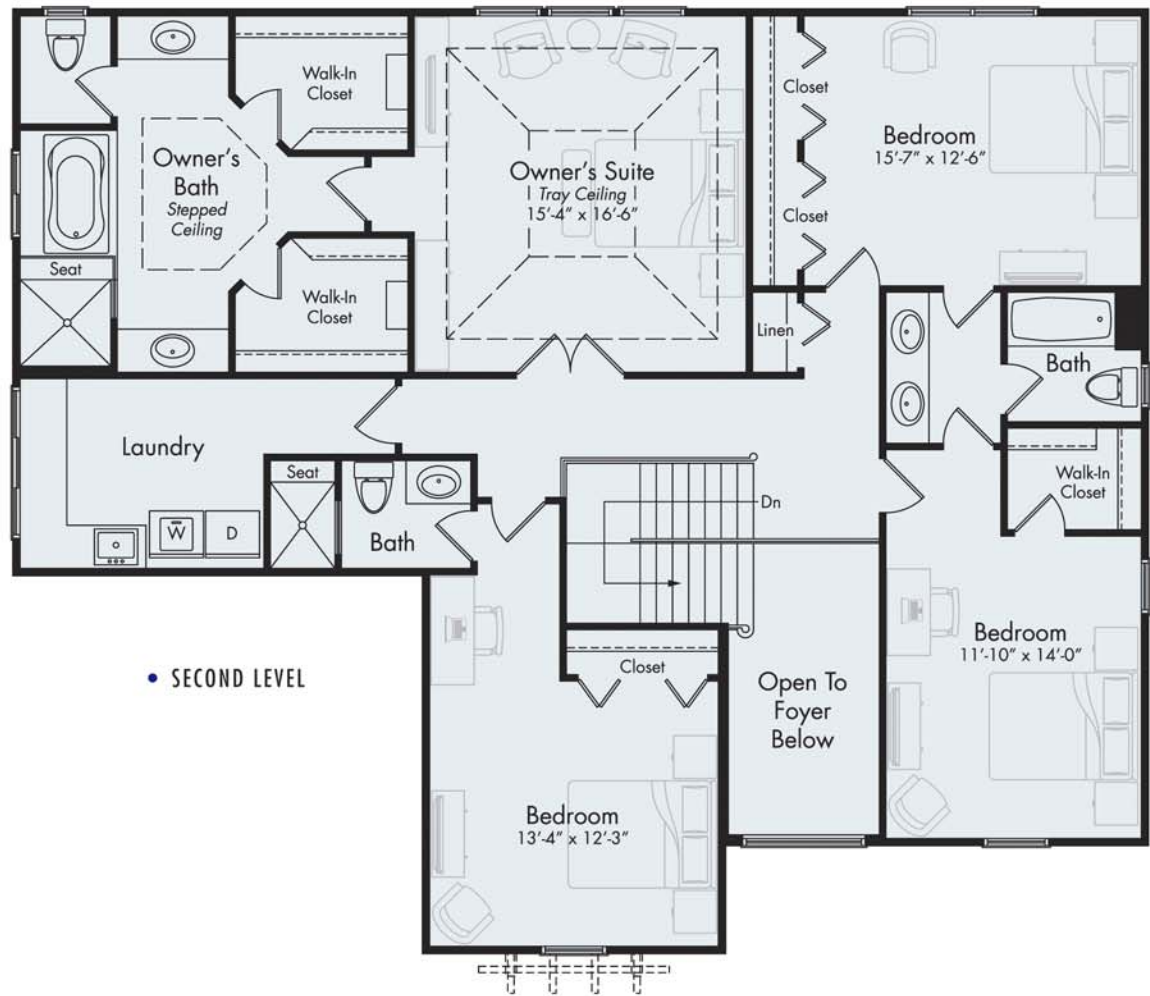
GRAND MORNINGSIDE

First Level	1,748 sf
Second Level	1,722 sf
Total	3,470 sf



The Grand Morningside is spacious, stunning and offers a versatile floor plan which can be customized to your family's lifestyle. The covered front porch is an inviting space to relax and greet family and friends. A spacious two-story foyer opens to the formal dining room and study. Sweeping sightlines join the family room, dining nook and expansive island kitchen, making meal preparation and entertainment effortless and enjoyable. A walk-in storage closet and optional desk located off the kitchen is perfect place for a family command center. The 3-car garage can be accessed through the mud room with optional lockers and walk-in closet for added storage.

A split bedroom plan features a guest suite with a private bath, plus two generous bedrooms that share a Jack-and-Jill bath. The owner's suite features a tray ceiling, twin walk-in closets and luxurious spa bath with a stepped ceiling detail. The oversized laundry room is conveniently located on the second floor.





All information contained herein was accurate at the time of publication. In order to maintain the high degree of quality and incorporate improvements with greater facilities and economy, we reserve the right to make changes in price, specifications, or materials or to change or discontinue models without notice or obligation. Floor plan dimensions are approximate. Renderings are artist's conception. 103019 © 2019 MJC Companies®



For Information Visit
MJCCompanies.com