



**HUNTERS RIDGE**  
LANDINGS

**ARROW**

First Level	1,248 sf
Second Level	732 sf
<b>Total</b>	<b>1,980 sf</b>

**Welcome To The Landings...**

For those who seek a brand new home — where lawn care, snow removal and other time-consuming chores are handled by the homeowner’s association, the Landings is a wise choice.

This is a unique opportunity for you to own a spacious home with modern design, two-car garage, full basement and private patio or balcony at a surprisingly affordable price.

The Landings provides all these benefits, plus excellent Hartland Schools, lower township taxes and a highly accessible location. Best of all, you are just steps away from the Shops at Waldenwood, the area’s premier retail center.

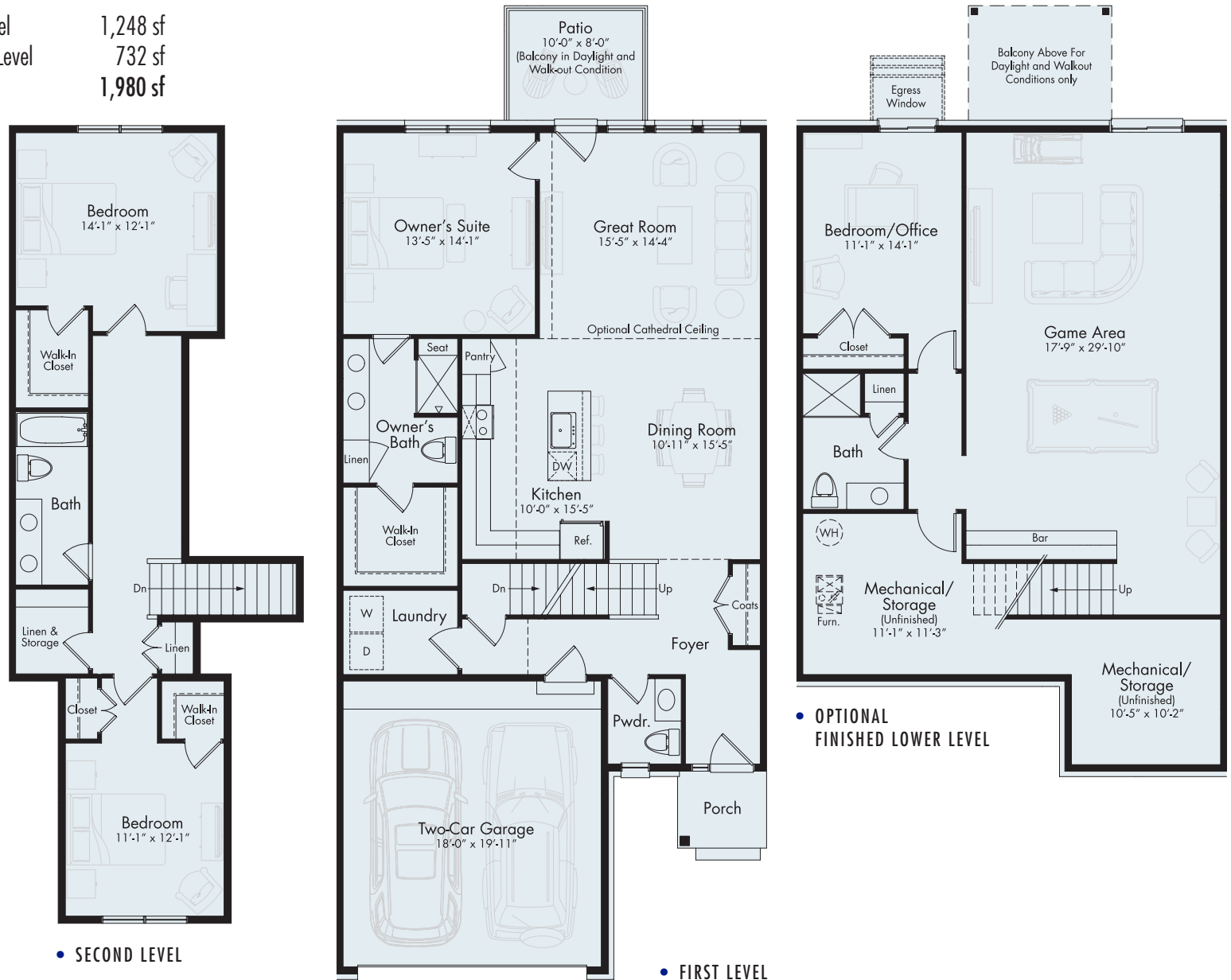
# ARROW

First Level 1,248 sf  
 Second Level 732 sf  
 Total 1,980 sf

Enter your spacious new condominium home from your two-car garage or private front porch. The two-story living offers plenty of room to stretch out. A step-saving kitchen surrounds you with conveniences, including an island with snack bar and pantry. The dining room flows into the great room, with an optional cathedral ceiling, and out to a private patio or balcony.

Upstairs there are two additional bedrooms with walk-in closets and a shared full bath.

The first floor owner's suite comes with a large walk-in closet and private bath with a linen closet. Right off the two-car garage is the convenience of the laundry room. The Arrow also includes a full basement that can be fully finished for expanded living space. So kick off your shoes and feel right at home!



MJCCompanies.com

All information contained herein was accurate at the time of publication. In order to maintain the high degree of quality and incorporate improvements with greater facilities and economy, we reserve the right to make changes in price, specifications, or materials or to change or discontinue models without notice or obligation. Floor plan dimensions are approximate. Renderings are artist's conception. 062023 © 2023 MJC Fox Ridge LLC

