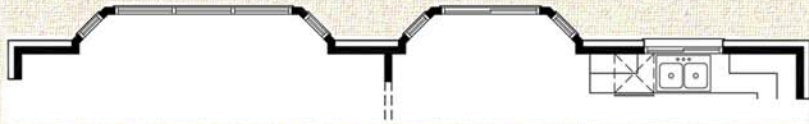
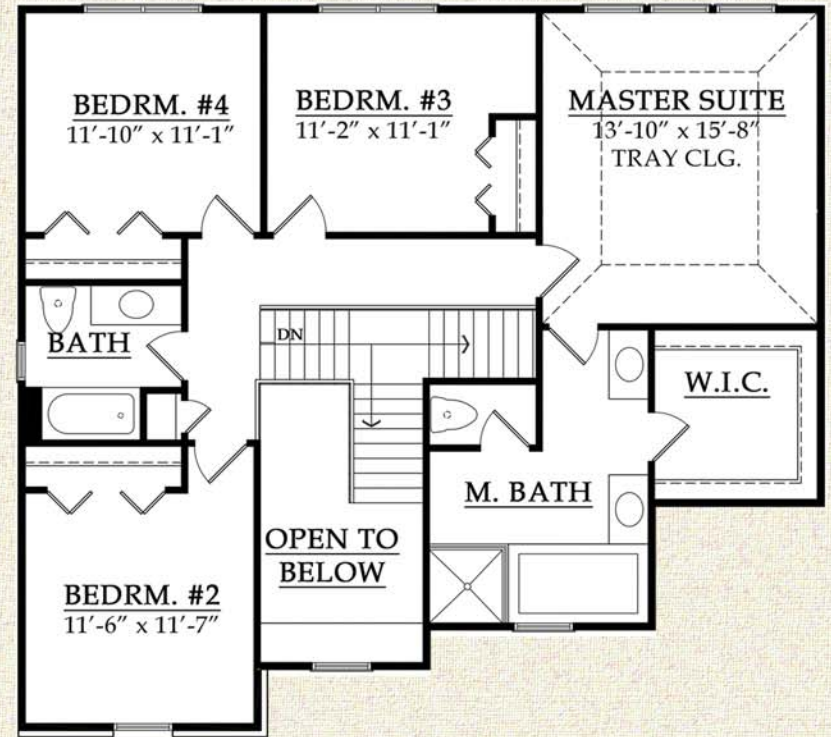


# INNSBROOK III



OPT. BAYS @ FAMILY AND NOOK



SECOND FLOOR PLAN

**SQUARE FOOTAGE**  
 FIRST FLOOR: 1,330 SQ. FT.  
 SECOND FLOOR: 1,149 SQ. FT.  
 TOTAL: 2,479 SQ. FT.

52'-11" X 45'-0" FOOTPRINT

ARTIST RENDERINGS AND FLOOR PLANS ARE FOR ILLUSTRATION PURPOSES ONLY AND ARE SUBJECT TO CHANGE. THESE PLANS ARE NOT TO BE REPRODUCED, CHANGED, OR COPIED IN ANY FORM OR MANNER WHATSOEVER.

WE RESERVE THE RIGHT TO MAKE CHANGES IN DESIGN, FEATURES AND OPTIONS WITHOUT NOTICE OR OBLIGATION. FLOOR PLAN DIMENSIONS AND SQUARE FOOTAGES ARE APPROXIMATE. NOTE: PLANS WILL VARY PER ELEVATION.

© 2014 MJC Companies®

