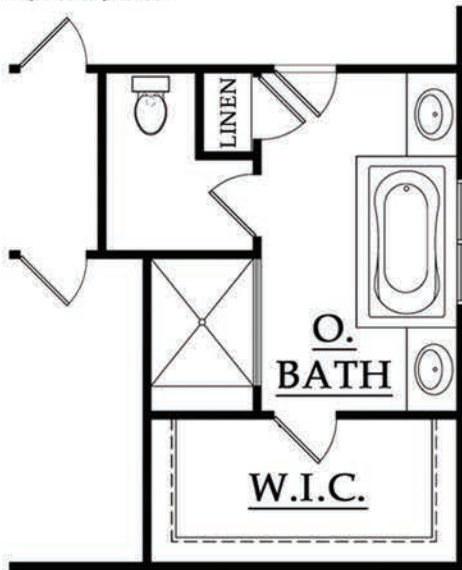
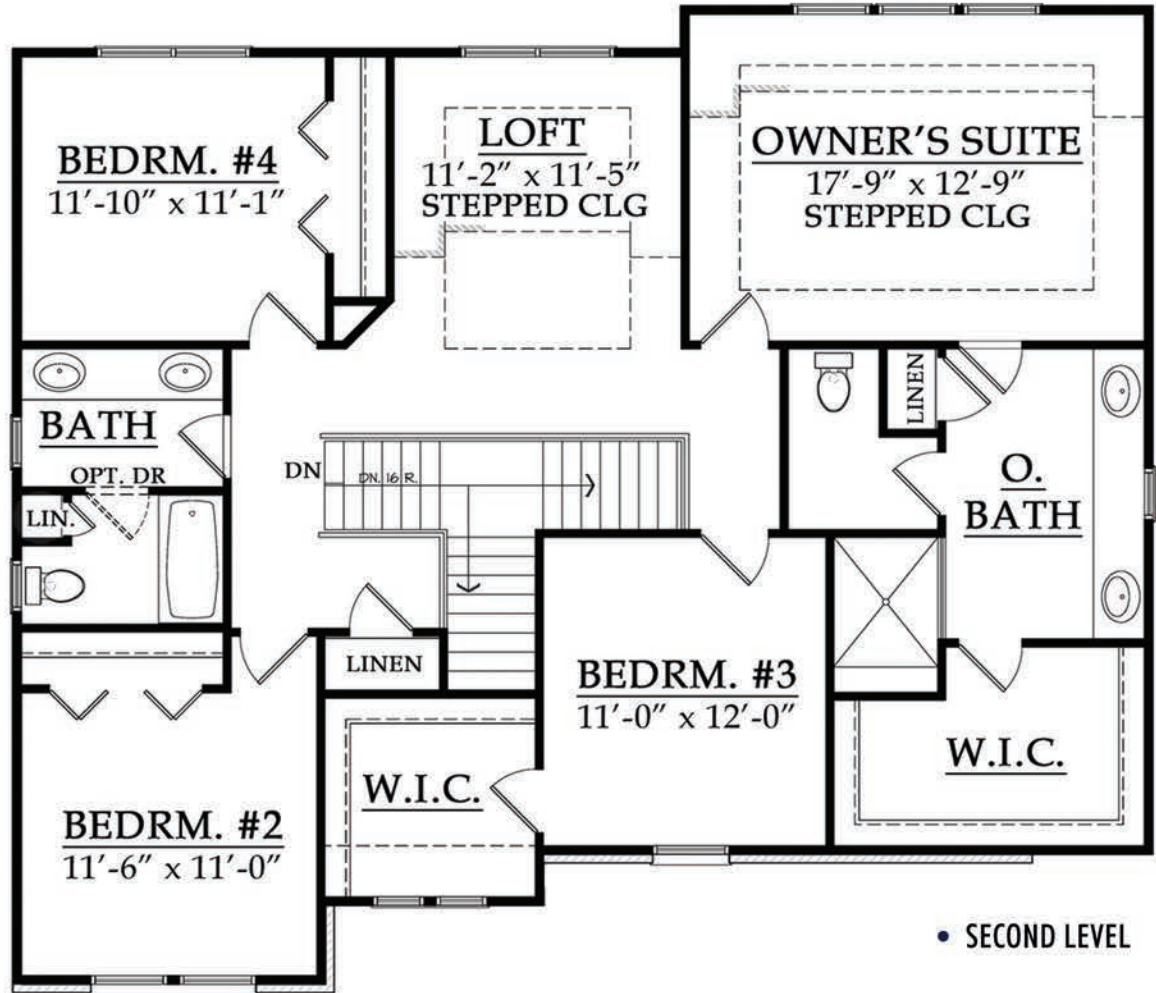


INNSBROOK LOFT

First Level 1,388 sf
 Second Level 1,453 sf
 Total 2,841 sf

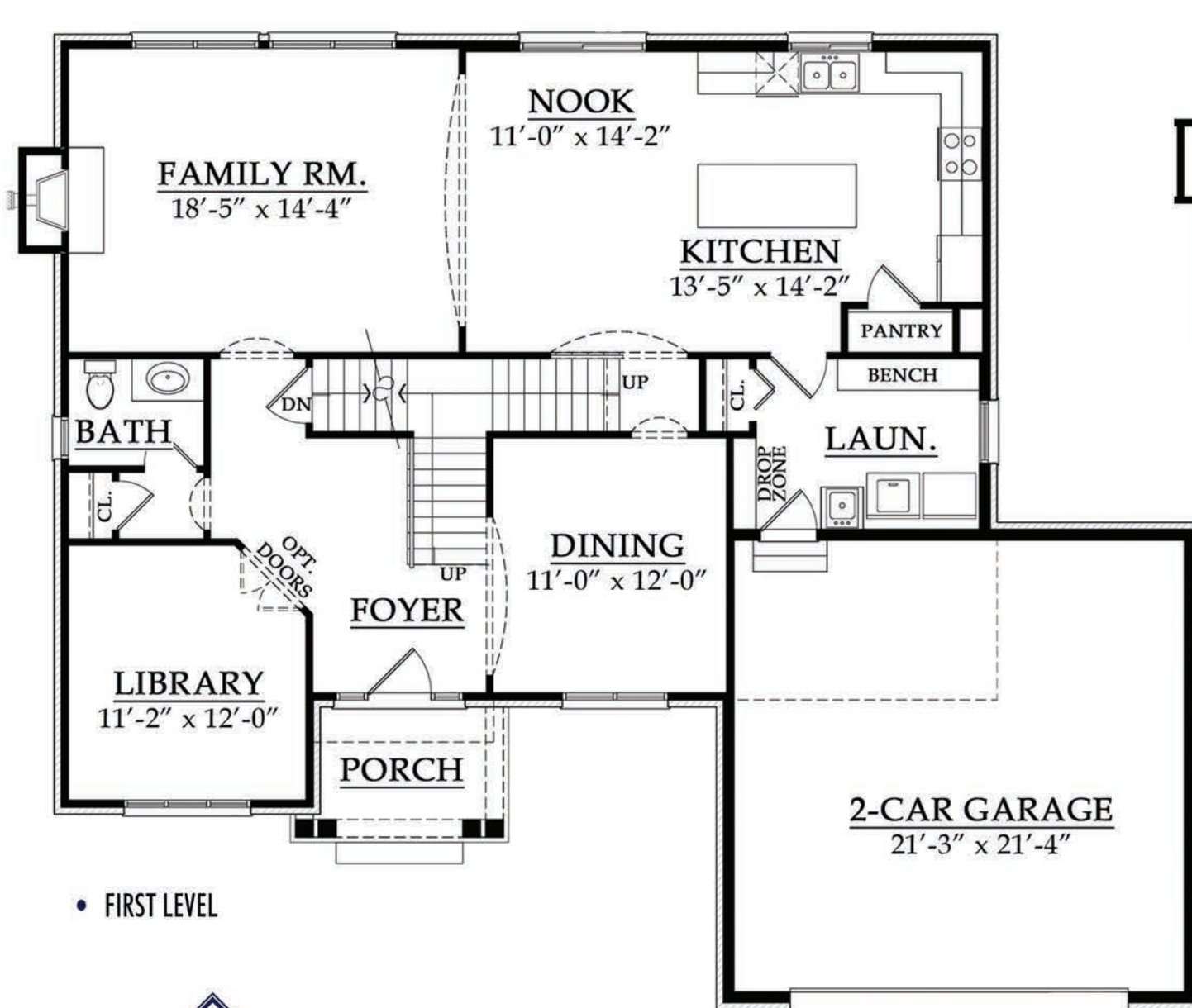


The Innsbrook Loft colonial has evolved to meet the demands of the modern family by maximizing the living area without sacrifice. On the first floor, the kitchen has been expanded to complement the dining room and library; each space is functional and designed with individual privacy in mind. On the second floor, the expansion of the owner's suite and addition of over 100 square feet of communal loft space, in addition to three additional bedrooms, leave nothing out. The owner's suite includes a detailed tray ceiling, spacious bath with optional soaking tub, twin vanities and walk-in closet. The Innsbrook Loft lives large – thanks to the open plan of the family room, nook and island kitchen. The two-car garage opens to a convenient mud room with an adjoining laundry room.



• OPTIONAL OWNERS BATH

• OPTIONAL BAY WINDOWS



• OPTIONAL LAUNDRY ROOM

• FIRST LEVEL