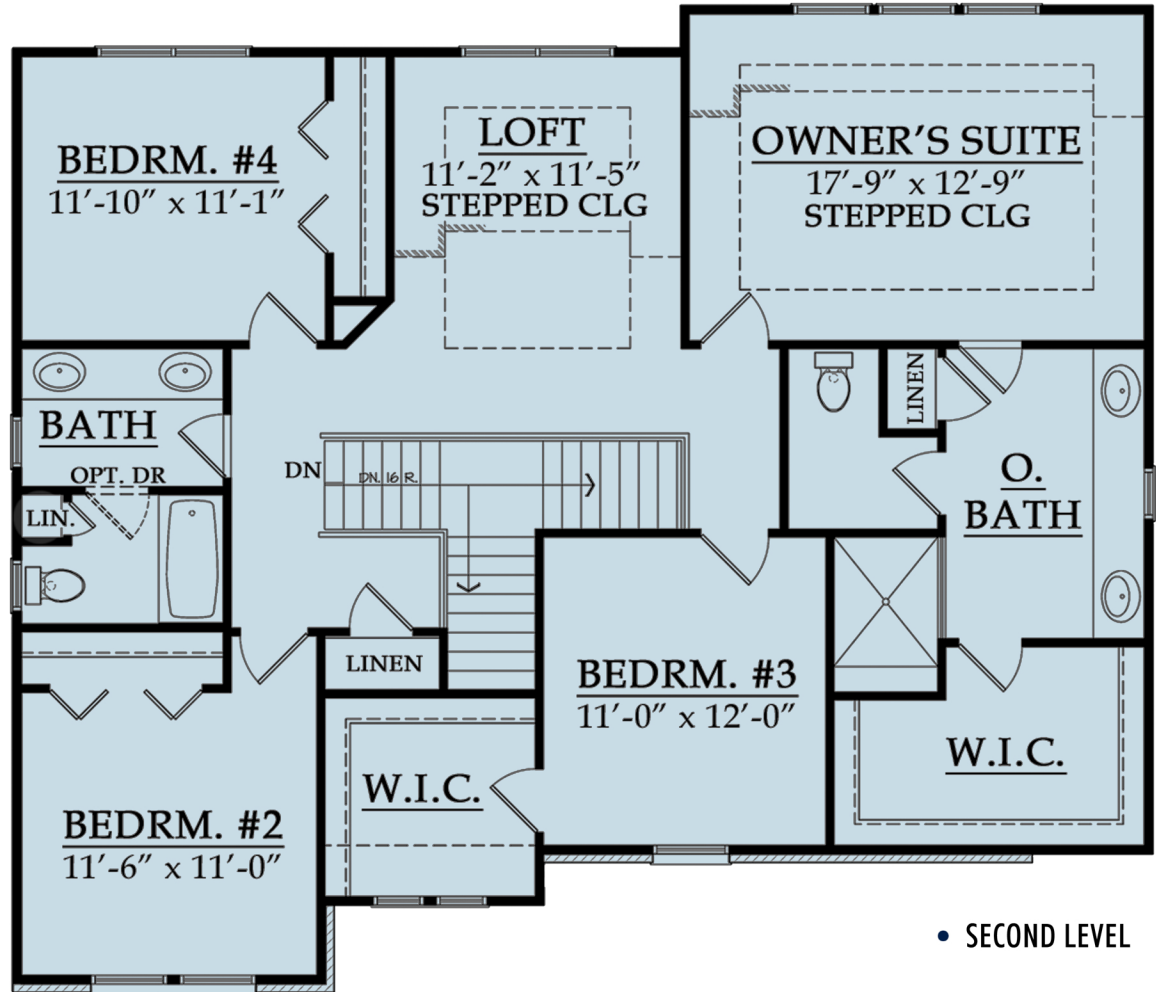


# INNSBROOK LOFT

First Level 1,388 sf  
 Second Level 1,453 sf  
 Total 2,841 sf

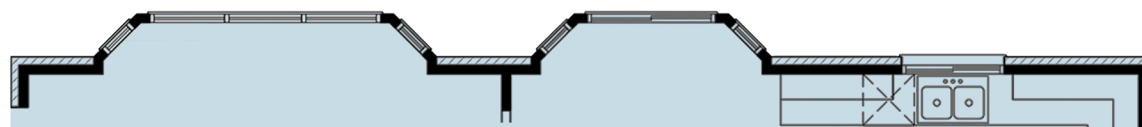
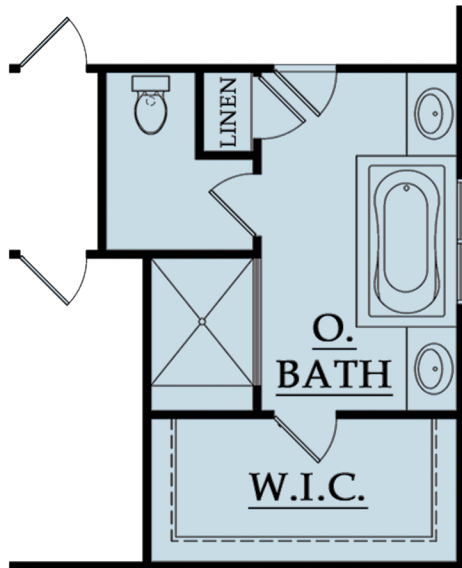


The Innsbrook Loft colonial has evolved to meet the demands of the modern family by maximizing the living area without sacrifice. On the first floor, the kitchen has been expanded to complement the dining room and library; each space is functional and designed with individual privacy in mind. On the second floor, the expansion of the owner's suite and addition of over 100 square feet of communal loft space, in addition to three additional bedrooms, leave nothing out. The owner's suite includes a detailed tray ceiling, spacious bath with optional soaking tub, twin vanities and walk-in closet. The Innsbrook Loft lives large – thanks to the open plan of the family room, nook and island kitchen. The two-car garage opens to a convenient mud room with an adjoining laundry room.

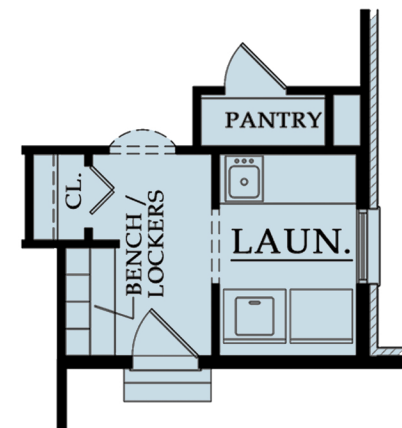
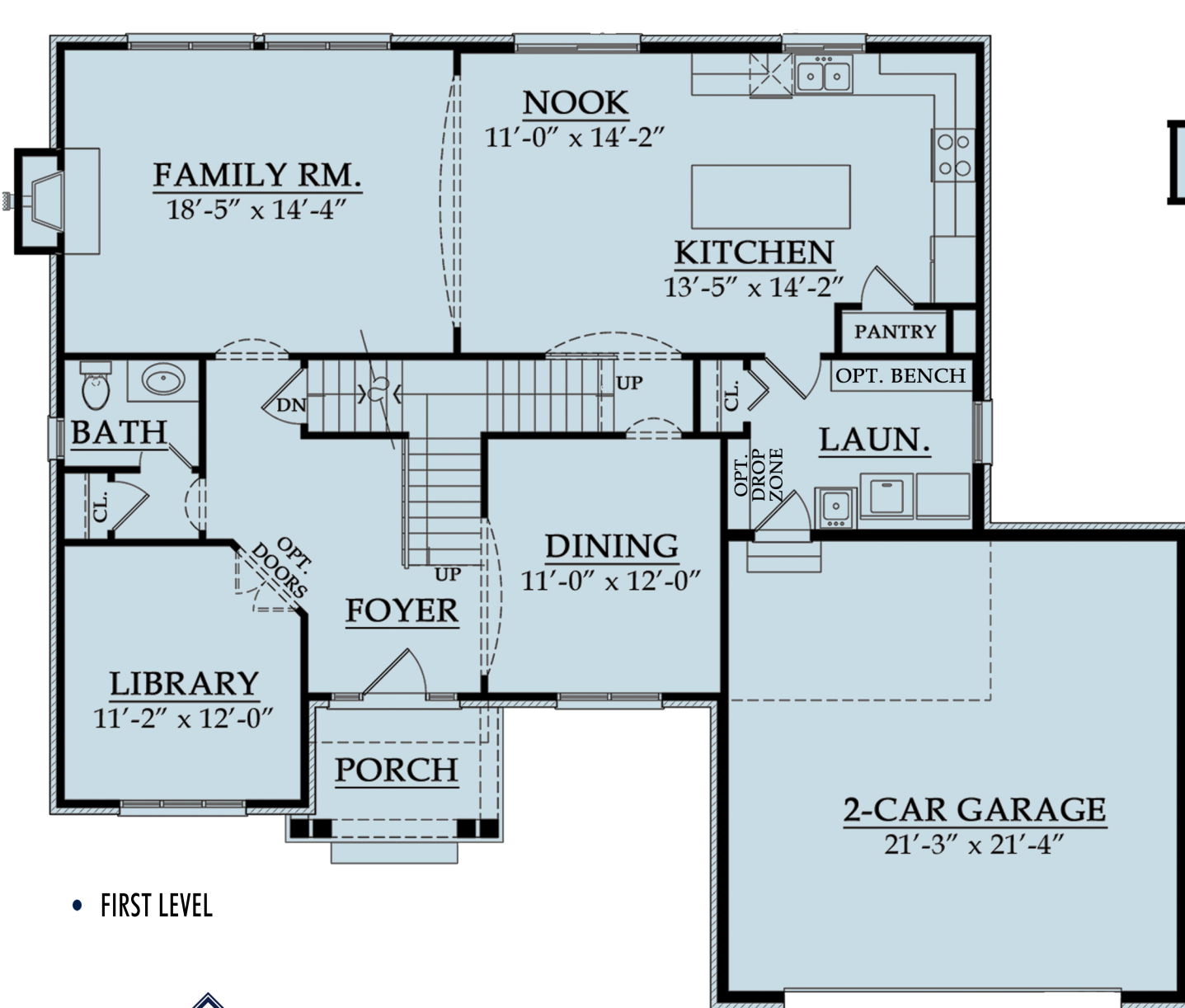


• SECOND LEVEL

• OPTIONAL OWNERS BATH



• OPTIONAL BAY WINDOWS



• OPTIONAL LAUNDRY ROOM

• FIRST LEVEL



MJCCompanies.com

All information contained herein was accurate at the time of publication. In order to maintain the high degree of quality and incorporate improvements with greater facilities and economy, we reserve the right to make changes in price, specifications, or materials or to change or discontinue models without notice or obligation. Floor plan dimensions are approximate. Renderings are artist's conception. 082624 © 2024 MJC Companies®

