

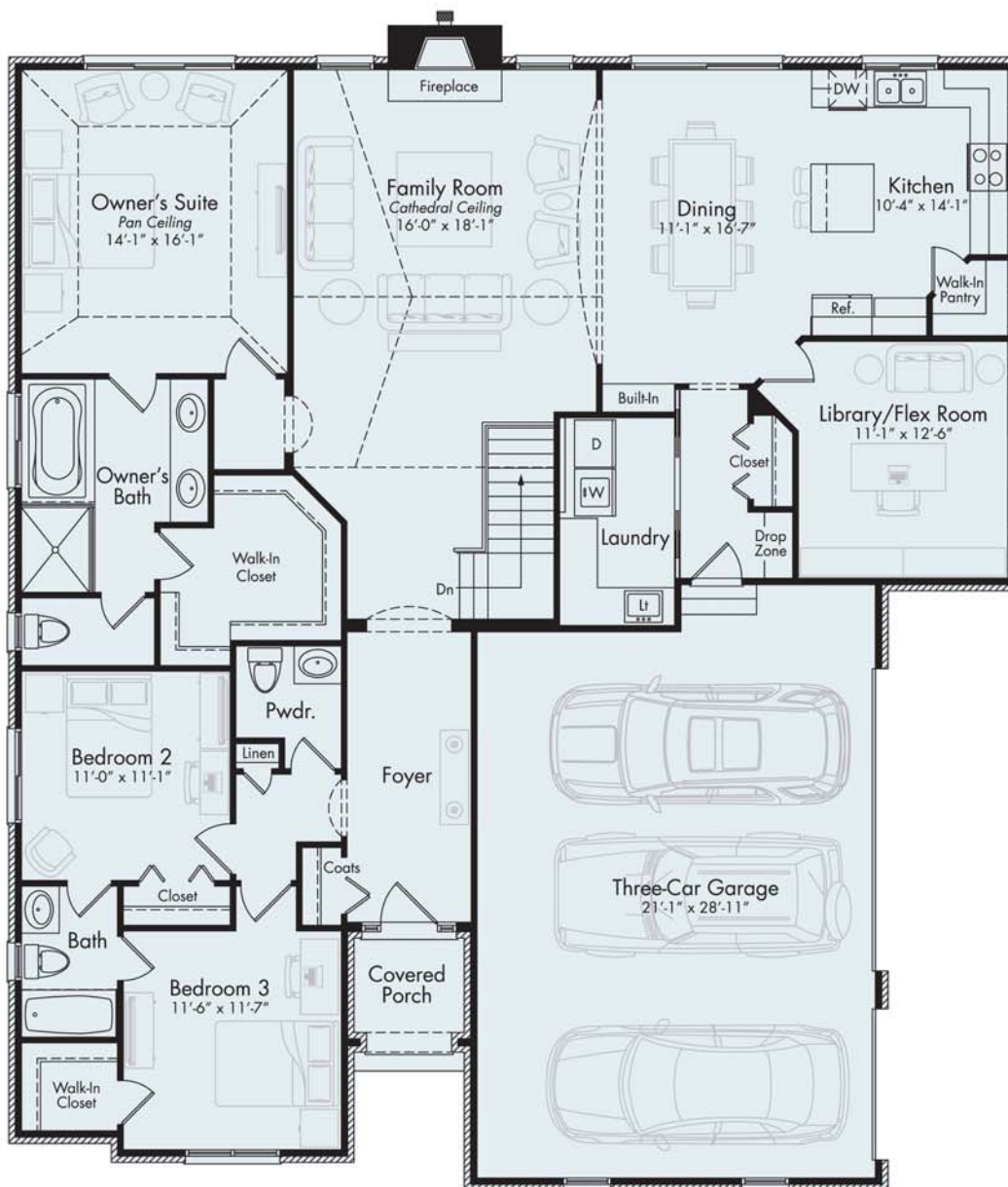
LAURA DELUXE

First Level

2,207 sf



The Laura Deluxe ranch home will fit the lifestyle of any family. The main living area easily flows from one room to another keeping the family connected. The family room, with a dramatic cathedral ceiling and fireplace, is the focal point as guests enter through the gallery foyer. Spend meal time with everyone in the dining room, while preparing the meals in the adjacent U-shaped kitchen with center island, snack bar and walk-in pantry. Right off the kitchen is a flex room that can be used as a home office, a study space for the kids, a hobby room and much more. The three-car attached garage enters into a drop zone with a coat closet and the first floor laundry room. With three bedrooms, you will have plenty of space for a growing family, or overnight guests. When you want to rejuvenate from a long day, the owner's suite with a pan ceiling is a retreat just waiting for you. The luxurious bath with dual vanity, separate soaking tub and shower, and large walk-in closet will help you to get ready in the morning, and help you relax at the end of the day.



• FIRST LEVEL



For Information Visit
MJCCompanies.com