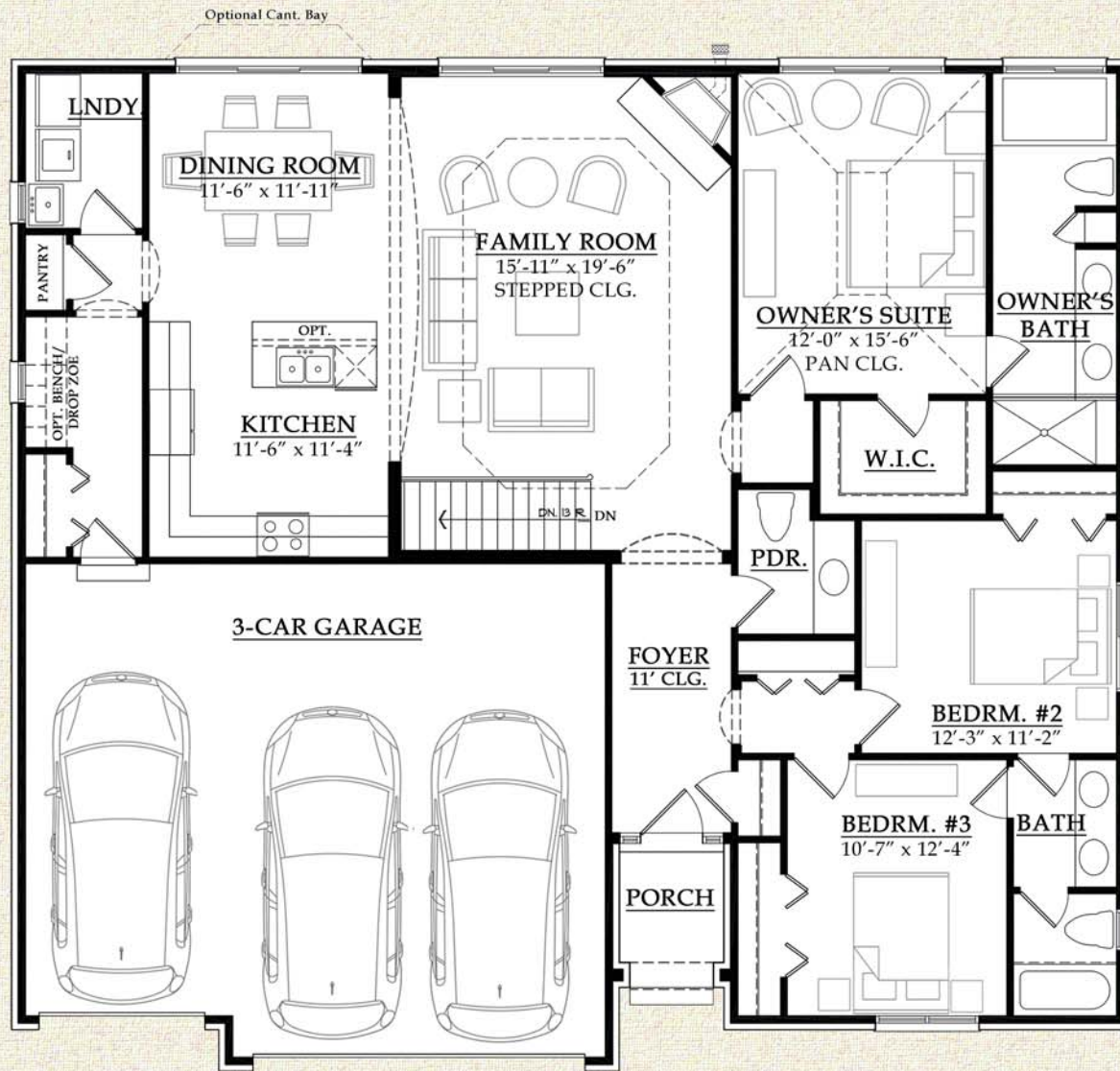


MARISA

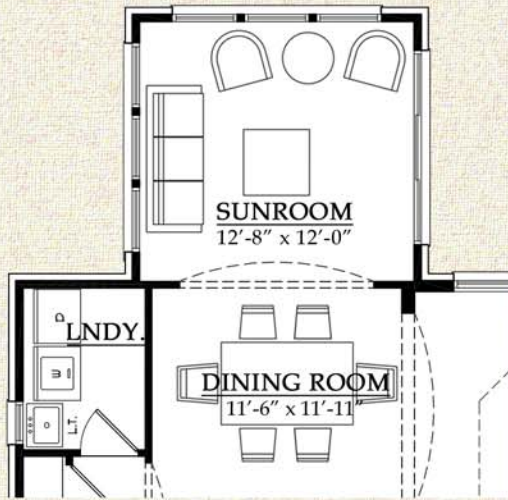


FIRST FLOOR PLAN

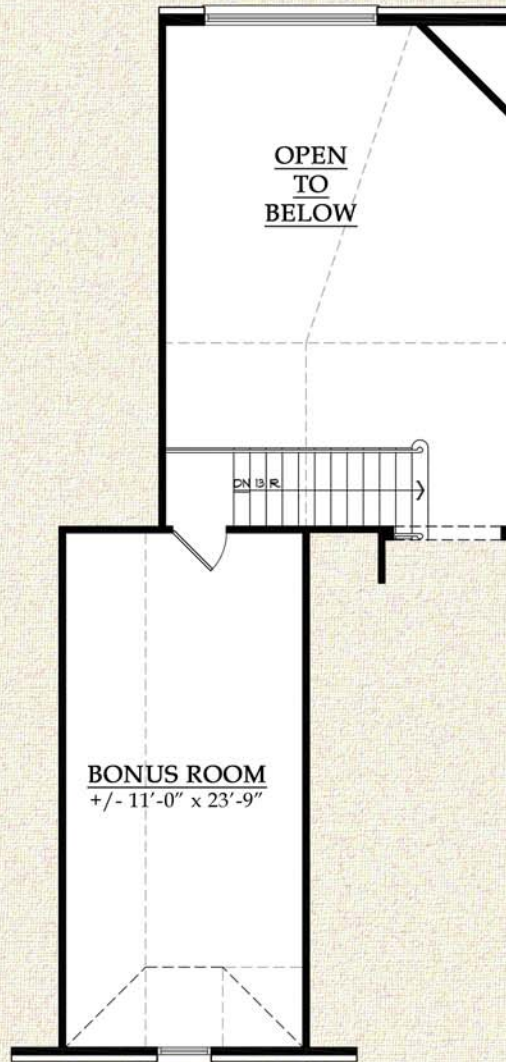
SQUARE FOOTAGE
TOTAL: 1,835 SQ. FT.

54'-0" X 48'-10" FOOTPRINT
9'-0" FIRST FLOOR HEIGHT

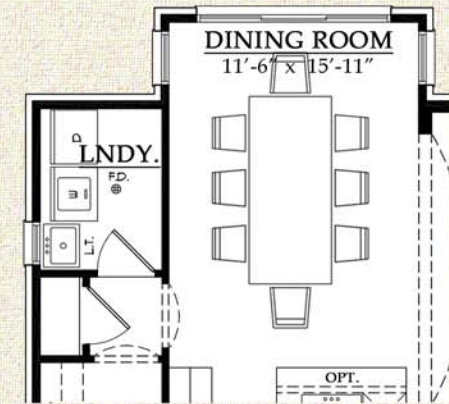
MARISA



OPT. SUNROOM
+173 SQ.FT.



OPT. BONUS ROOM
+287 SQ.FT.



OPT. 4' EXPANDED
DINING ROOM
+51 SQ.FT.