

# STRASBOURG II

First Level

3,659 sf

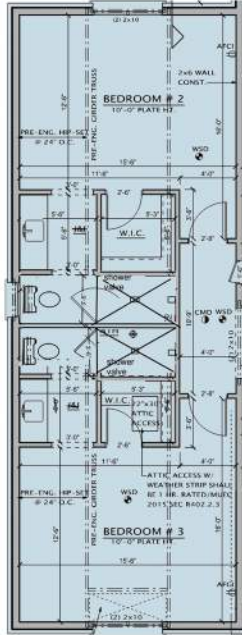


The Strasbourg II was specifically designed for modern living, incorporating the latest features sought after by the most discerning homeowners. It's all in the details. At first glance, the general layout is a perfect match for any family looking to entertain, either indoors in the spacious kitchen with alcove seating, or outdoors on the large covered lanai projecting into the rear yard perfectly for access to a potential pool, patio or meticulously manicured softscape. As a split ranch, the Master Suite with generously proportioned and accessorized bath and closet areas, is by definition separated from the other bedrooms; however, the direct lanai/yard access and abundance of natural light are far from isolating. Considering the convenience of all residents, the Strasbourg includes a side covered porch, basement access from the 4 car garage, a spacious mud area with bench, cubbies and walk-in closet, separate vanities and walk-in closet for each bedroom, a laundry room with abundant cabinet and countertop space, large walk-in pantry, oversized island with sink and dishwasher, and great room with elegant linear fireplace and accent tiles or stone veneer.

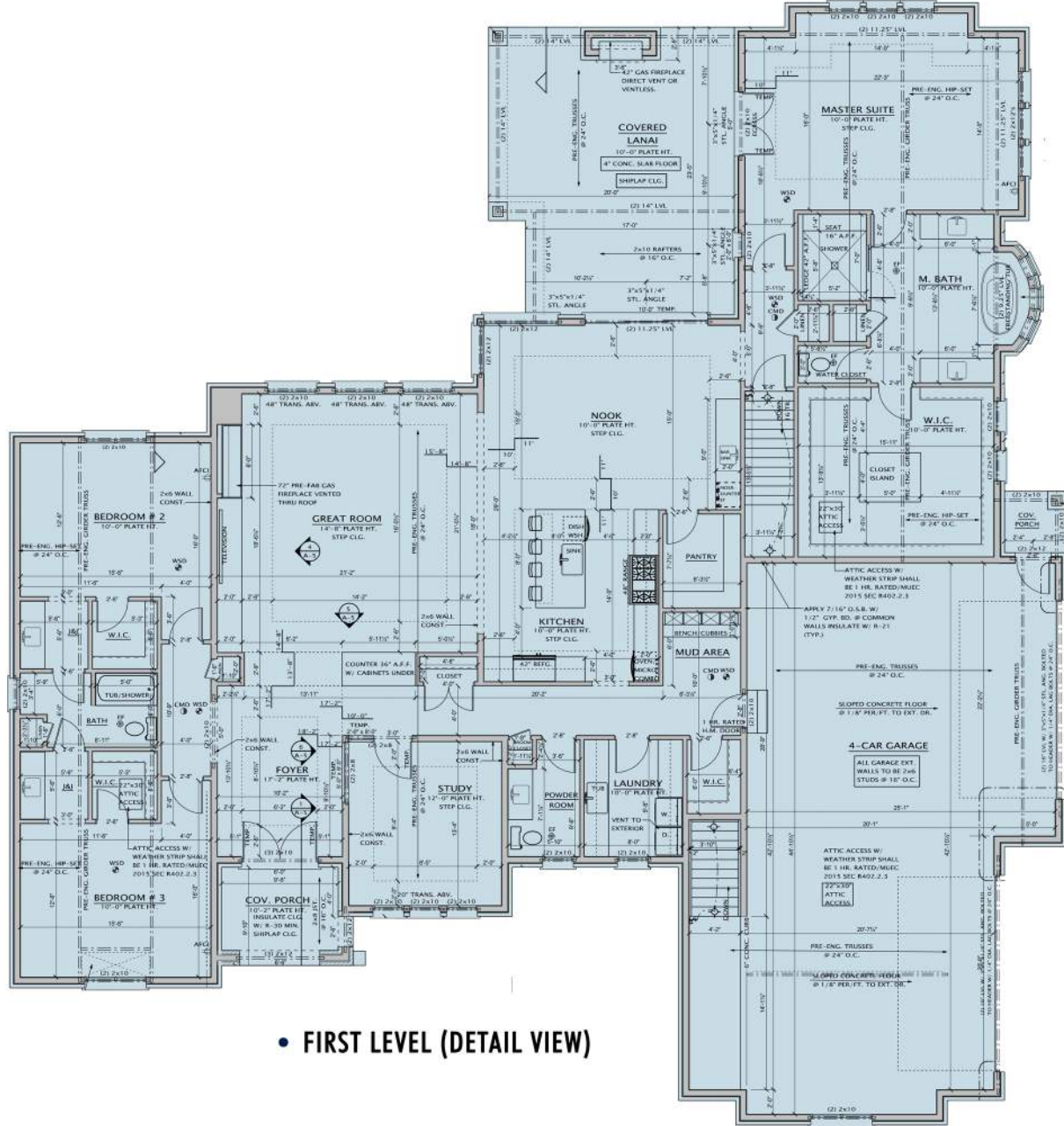


• FIRST LEVEL

86' x 91'-5" FOOTPRINT  
 10' MINIMUM to 17'-2" CEILING HEIGHT  
 WHERE STEPPED/VAULTED



• OPTIONAL ALT BATH LAYOUT



• FIRST LEVEL (DETAIL VIEW)



MJCCompanies.com

All information contained herein was accurate at the time of publication. In order to maintain the high degree of quality and incorporate improvements with greater facilities and economy, we reserve the right to make changes in price, specifications, or materials or to change or discontinue models without notice or obligation. Floor plan dimensions are approximate. Renderings are artist's conception. 051024 © 2024 MJC Companies®

