

# WALDORF

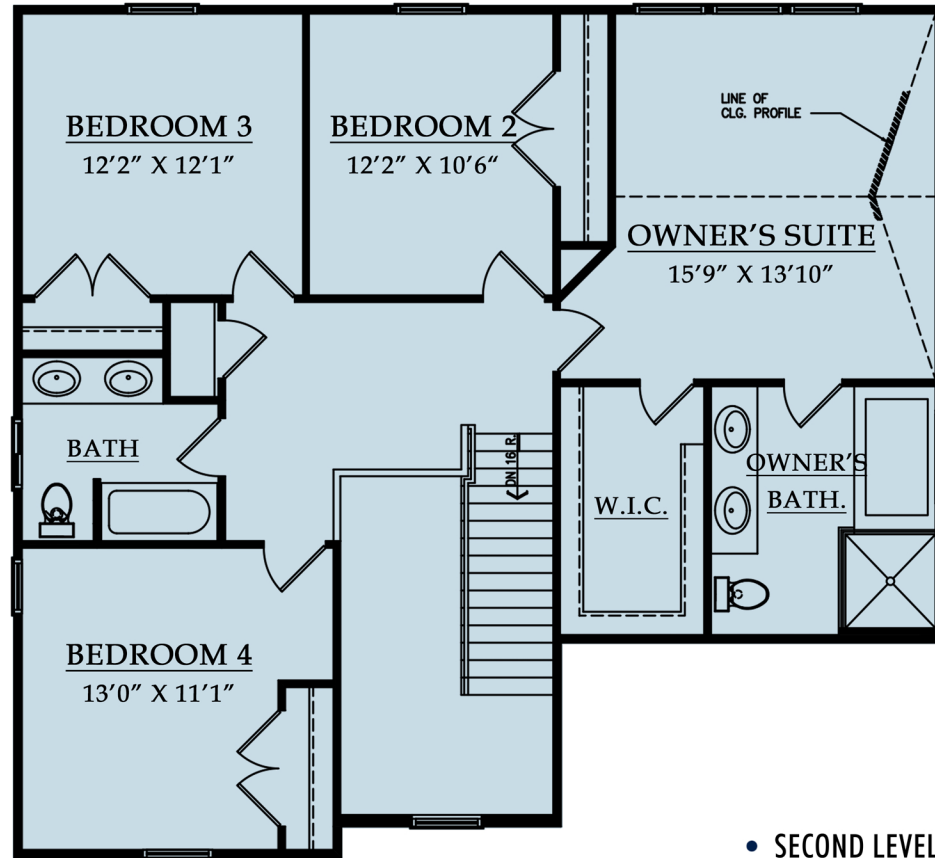
First Level	1,216 sf
Second Level	1,154 sf
<b>Total</b>	<b>2,370 sf</b>



Presenting the Waldorf, a meticulously designed home offering spacious and versatile living for the modern family. The first floor welcomes you with a grand two-story Foyer that leads into flexible living spaces, including a dedicated Library and a convenient Powder Room. The heart of the home features a well-appointed Kitchen with a Walk-in Pantry, seamlessly connecting to a bright Nook and a comfortable Family Room. Practical amenities like a Laundry room and a spacious Garage are also conveniently located on this level.

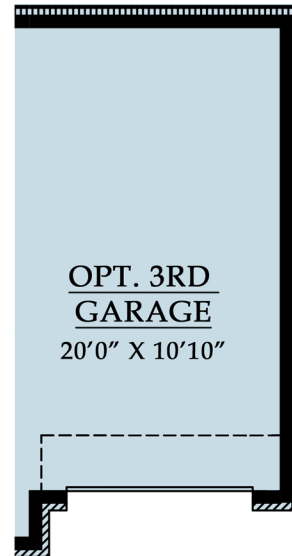
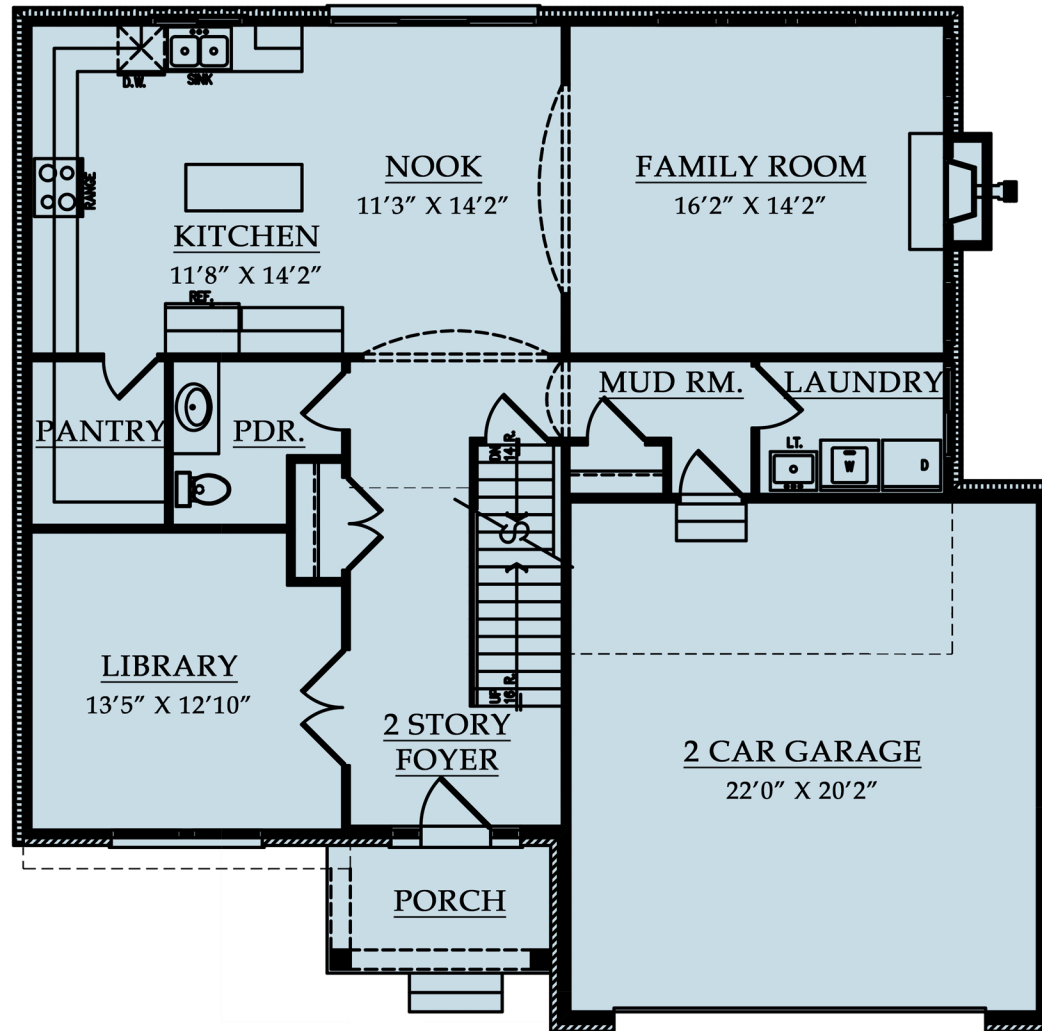
Upstairs, the second floor provides private retreats with an impressive Owner's Suite featuring an Owner's Bath and a Walk-in Closet, alongside three additional generous Bedrooms and an additional Bath.

Enhance your Waldorf home with popular options such as an Extended Dining area for larger gatherings, an expanded 3-Car Garage for additional storage or vehicles, and an inviting Full Porch perfect for enjoying the outdoors. The Waldorf floor plan combines functionality, comfort, and customizable options to create your ideal living space.



EXTENDED  
DINING  
11'1" X 5'8"

- **OPTIONAL EXTENDED DINING**  
Additional 70 sf at 1st Floor & Basement



- **OPTIONAL FULL FRONT PORCH**

- **FIRST LEVEL**

- **OPTIONAL 3 CAR GARAGE**



MJCCompanies.com

*All information contained herein was accurate at the time of publication. In order to maintain the high degree of quality and incorporate improvements with greater facilities and economy, we reserve the right to make changes in price, specifications, or materials or to change or discontinue models without notice or obligation. Floor plan dimensions are approximate. Renderings are artist's conception. 072425 © 2025 MJC Companies®*

