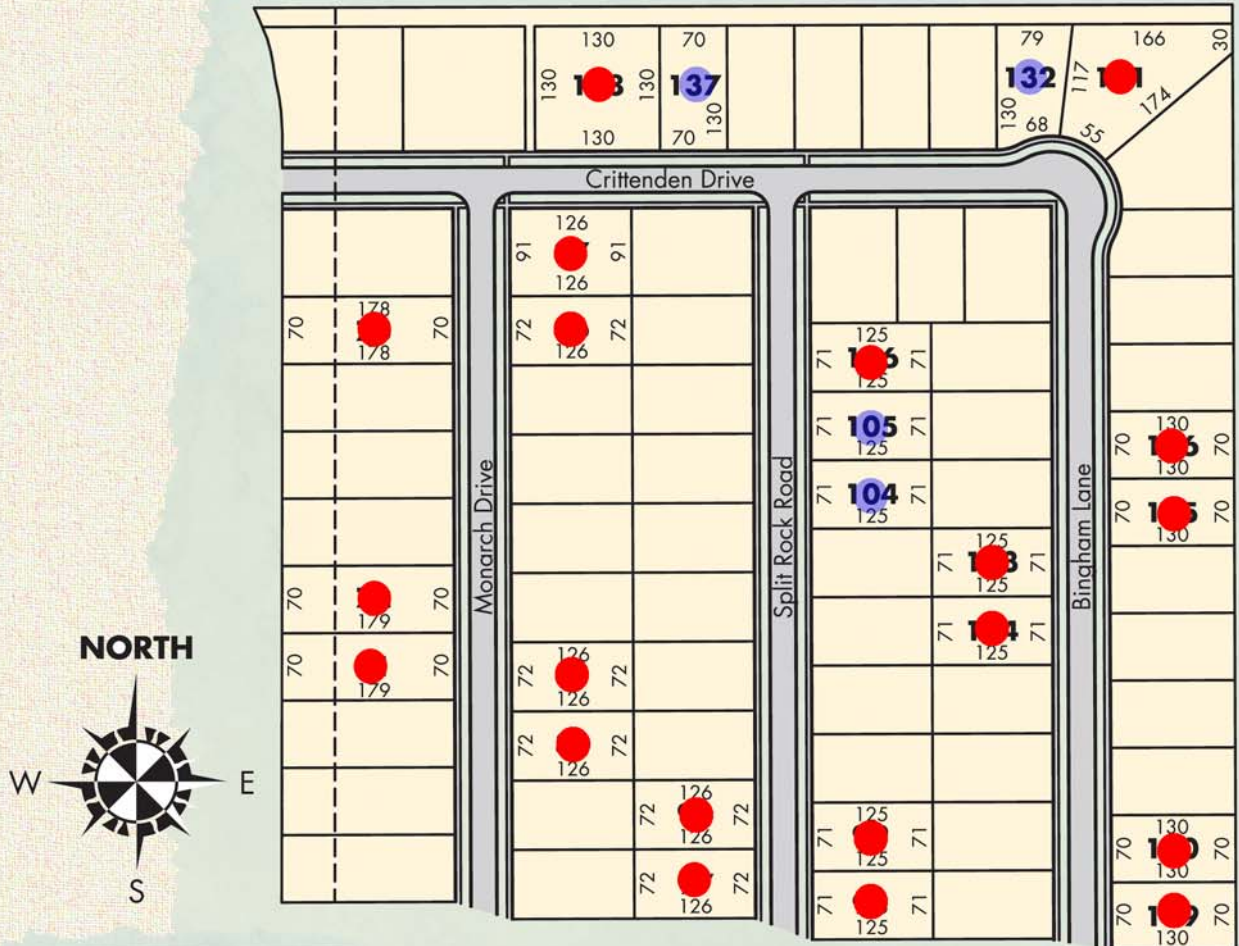


# PHASE II SITE PLAN



**MONARCH**  
ESTATES

Located on the North side of 22 Mile Road, between Garfield & Romeo Plank

(586) 267-5092 office

(586) 267-5093 fax

[www.mjccompanies.com](http://www.mjccompanies.com)



EQUAL HOUSING OPPORTUNITY

Revised 05/10/21

ALL INFORMATION CONTAINED HEREIN WAS ACCURATE AT THE TIME OF PUBLICATION. IN ORDER TO MAINTAIN THE HIGH DEGREE OF QUALITY AND INCORPORATE MANAGEMENT WITH GREATER FACILITY AND ECONOMY, WE RESERVE THE RIGHT TO MAKE CHANGES IN PRICE, SPECIFICATIONS, MATERIALS OR TO CHANGE OR DISCONTINUE MODELS WITHOUT NOTICE OR OBLIGATION. FLOOR PLAN DIMENSIONS ARE APPROXIMATE. SQUARE FOOTAGE CALCULATED FROM EXTERIOR WALL. MASTER DEED REFLECTS INTERIOR DIMENSIONS. © 2016

